

HK[®]

KNIVES
2015 CATALOG





NO COMPROMISE

For more than a half century, Heckler and Koch has been a leading designer and manufacturer of military, law enforcement and civilian firearms. HK's commitment to quality, innovation and safety makes them an industry leader in reliability and technology.

This dedication continues with HK Knives, where superior edged tools combine leading technology with practical design. These advancements are deployed throughout the product line with technologies like Nitrous® Assist and out-the-front (OTF). In addition, aerospace industry tolerance standards provide a complementary fit and finish.

Our customers live the HK motto – No Compromise – and for this reason, you have our commitment that we will continuously pursue innovation and performance in all of the products we offer.



14717 HK® AXIS®

AXIS® returns to HK in a package that brings new levels of performance.

MECHANISM AXIS® lock

BLADE STYLE Tanto

BLADE STEEL D2 tool steel (60-62HRC)

HANDLE Black textured G10 with stainless steel liners

EXTRA Reversible tip-up pocket clip



14717BK
14717SBK

\$155

BLACK

SERR/BLACK

BLADE LENGTH

3.69" (9.37cm)

HANDLE THICKNESS

0.51" (12.95mm)

OPEN

8.34" (21.18cm)

CLOSED

4.64" (11.79cm)

WEIGHT

4.97oz (140.90g)

AXIS®



14715BK

14716SBK
MINI

HK® AXIS®

MECHANISM AXIS® lock

BLADE STYLE Clip-point

BLADE STEEL D2 tool steel (60-62HRC)

HANDLE Black textured G10 with stainless steel liner

EXTRA Reversible tip-up pocket clip



				14715	14716
14715BK	\$155	BLACK	BLADE LENGTH	3.69" (9.37cm)	2.88" (7.32cm)
14715SBK	\$155	SERR/BLACK	HANDLE THICKNESS	0.51" (12.95mm)	0.44" (11.18mm)
14716BK	\$145	BLACK	OPEN	8.34" (21.18cm)	6.50" (16.51cm)
14716SBK	\$145	SERR/BLACK	CLOSED	4.64" (11.79cm)	3.62" (9.19cm)
			WEIGHT	4.96oz (140.61g)	2.88oz (81.65g)

AXIS®



14715BK-1

14716SBK-1
MINI

HK® AXIS®

MECHANISM AXIS® lock

BLADE STYLE Clip-point

BLADE STEEL D2 tool steel (60-62HRC)

HANDLE Sand, textured G10 with stainless steel liner

EXTRA Reversible tip-up pocket clip



				14715-1	14716-1
14715BK-1	\$155	BLACK	BLADE LENGTH	3.69" (9.37cm)	2.88" (7.32cm)
14715SBK-1	\$155	SERR/BLACK	HANDLE THICKNESS	0.51" (12.95mm)	0.44" (11.18mm)
14716BK-1	\$145	BLACK	OPEN	8.34" (21.18cm)	6.50" (16.51cm)
14716SBK-1	\$145	SERR/BLACK	CLOSED	4.64" (11.79cm)	3.62" (9.19cm)
			WEIGHT	4.96oz (140.61g)	2.88oz (81.65g)

OUT-THE-FRONT (OTF)

14808BK-1



14808BK



NEW 14808 TURMOIL™

MECHANISM Double action out-the-front (OTF) automatic with ambidextrous, asymmetrical, gray anodized thumb-button opener

BLADE STYLE Drop-point

BLADE STEEL D2 tool steel (60-62HRC)

HANDLE 14808-1: Sand, anodized 6061-T6 billet aluminum; 14808: Black anodized 6061-T6 aluminum

EXTRA Reversible tip-down pocket clip



14808	\$300	
14808BK	\$315	BLACK
14808-1	\$300	
14808BK-1	\$315	BLACK

BLADE LENGTH	3.47" (8.81cm)
HANDLE THICKNESS	0.47" (11.94mm)
OPEN	8.10" (20.57cm)
CLOSED	4.63" (11.76cm)
WEIGHT	3.43oz (97.24g)

OUT-THE-FRONT (OTF)



EPIDEMIC[®]

MECHANISM Double action out-the-front (OTF) automatic with ambidextrous red anodized thumb-button opener

BLADE STYLE Spear-point

BLADE STEEL D2 tool steel (60-62HRC)

HANDLE Black anodized 6061-T6 billet aluminum

EXTRA Reversible tip-down pocket clip



14850

\$290

14850BK

\$305

BLACK

BLADE LENGTH

3.50" (8.89cm)

HANDLE THICKNESS

0.55" (13.97mm)

OPEN

8.29" (21.06cm)

CLOSED

4.79" (12.17cm)

WEIGHT

3.86oz (109.43g)

AUTOMATIC



14701SBK

14751BK
MINI



14702BK

ENTOURAGE

MECHANISM Push-button automatic with integrated safety

BLADE STYLE 14701/14751: Tanto; 14702: Drop-point

BLADE STEEL 440C stainless steel (58-60HRC)

HANDLE Black anodized 6061-T6 billet aluminum

EXTRA Tip-up pocket clip



				14701	14751	14702
14701BK	\$175	BLACK	BLADE LENGTH HANDLE THICKNESS OPEN CLOSED WEIGHT	3.74" (9.50cm)	2.87" (7.29cm)	3.78" (9.60cm)
14701SBK	\$175	SERR/BLACK		0.53" (13.46mm)	0.49" (12.45mm)	0.53" (13.46mm)
14751BK	\$160	BLACK		8.44" (21.44cm)	6.78" (17.22cm)	8.48" (21.54cm)
14751SBK	\$160	SERR/BLACK		4.70" (11.94cm)	3.91" (9.93cm)	4.70" (11.94cm)
14702BK	\$175	BLACK		4.64oz (131.54g)	3.70oz (104.90g)	4.55oz (128.99g)
14702SBK	\$175	SERR/BLACK				



6000012SBK

6000010BK

MP5

MECHANISM Push-button automatic with integrated safety

BLADE STYLE 6000012: Tanto; 6000010: Drop-point

BLADE STEEL 154CM stainless steel (58-61HRC)

HANDLE Black anodized 6061-T6 billet aluminum with extended steel back spacer

EXTRA Reversible tip-up pocket clip



				6000012	6000010
6000010BK	\$230	BLACK	BLADE LENGTH HANDLE THICKNESS OPEN CLOSED WEIGHT	3.40" (8.64cm)	3.40" (8.64cm)
6000010SBK	\$230	SERR/BLACK		0.62" (15.75mm)	0.62" (15.75mm)
6000012BK	\$230	BLACK		8.50" (21.59cm)	8.50" (21.59cm)
6000012SBK	\$230	SERR/BLACK		5.00" (12.70cm)	5.00" (12.70cm)
				4.97oz (140.90g)	4.94oz (140.05g)

ASSIST



NITROUS® BLITZ®

MECHANISM Liner lock with Nitrous® Assist

BLADE STYLE Clip-point

BLADE STEEL 154CM stainless steel (58-61HRC)

HANDLE Black textured G10 with titanium liners



14460	\$145	
14460BT	\$160	BLACK
14460SBT	\$160	SERR/BLACK

BLADE LENGTH	3.40" (8.64cm)
HANDLE THICKNESS	0.43" (10.92mm)
OPEN	8.00" (20.32cm)
CLOSED	4.60" (11.68cm)
WEIGHT	2.70oz (76.54g)

6000008SBT



14651SBT



14652SBT

P30 ASSIST

MECHANISM Liner lock assist

BLADE STYLE Drop-point

BLADE STEEL 8CR13 stainless steel (57-59HRC)

HANDLE 6000008: Black thermoplastic;
14651: OD green thermoplastic;
14652: Tan thermoplastic

EXTRA P30 grip texture

6000008BT	\$65	BLACK
6000008SBT	\$65	SERR/BLACK
14651SBT	\$65	SERR/BLACK
14652SBT	\$65	SERR/BLACK

BLADE LENGTH	2.95" (7.49cm)
HANDLE THICKNESS	0.48" (12.19mm)
OPEN	6.75" (17.15cm)
CLOSED	3.88" (9.86cm)
WEIGHT	2.60oz (73.71g)

MANUAL

14440SB

14440SG

14447SG

14447SB

ALLY[®]

MECHANISM Monolock

BLADE STYLE 14440: Drop-point;
14447: Tanto

BLADE STEEL AUS-8 stainless steel

HANDLE Black or gray, one-piece 420J stainless steel assembly

EXTRA Tip-up pocket clip and glass breaker

14440SB	\$45	SERR/BLACK	BLADE LENGTH	2.80" (7.11cm)
14440SG	\$45	SERR/GRAY	HANDLE THICKNESS	0.30" (7.62mm)
14447SB	\$45	SERR/BLACK	OVERALL LENGTH	6.87" (17.45cm)
14447SG	\$45	SERR/GRAY	CLOSED	4.10" (10.41cm)
			WEIGHT	2.68oz (75.98g)

MANUAL



14402SBK

14412
MINI



14452SBK

PIKA[®]

MECHANISM Lock-back

BLADE STYLE 14402/14412: Drop-point;
14452: Tanto

BLADE STEEL 8CR13 stainless steel (58-60HRC)

HANDLE Glass-filled nylon with 420J stainless steel liners

EXTRA Reversible tip-up/down deep carry pocket clip

				14402/14452	14412
14402	\$50		BLADE LENGTH	3.50" (8.89cm)	2.90" (7.37cm)
14402SBK	\$50	SERR/BLACK	HANDLE THICKNESS	0.45" (11.43mm)	0.45" (11.43mm)
14412	\$45		OVERALL LENGTH	8.32" (21.13cm)	6.97" (17.70cm)
14452SBK	\$50	SERR/BLACK	CLOSED	4.82" (12.24cm)	4.07" (10.34cm)
			WEIGHT	3.74oz (106.03g)	3.74oz (106.03g)



NO COMPROMISE

Knives like the Dispatch™ were built for the elite. Born from a rich history in special operations equipment design and manufacturing, there is no exception. No compromise.



NEW 14147 DISPATCH™

MECHANISM Fixed blade

BLADE STYLE Tanto

BLADE STEEL D2 tool steel (60-62HRC)

HANDLE Black Santoprene®

SHEATH Molded with integrated detent

EXTRA Reversible clip



14147BK

\$90

BLACK

BLADE LENGTH

4.33" (11.00cm)

14147SBK

\$90

SERR/BLACK

HANDLE THICKNESS

0.51" (13.08mm)

OPEN

9.11" (23.14cm)

WEIGHT

4.89oz (138.63g)

FIXED



14125BK-1



14125BK

PLAN D

MECHANISM Fixed blade

BLADE STYLE Wharnccliffe with angled profile

BLADE STEEL N680 ultra-stainless steel
(57-59HRC)

HANDLE 14125BK: Black Grivory®;
14125BK-1: Sand Grivory®

SHEATH Low profile, molded with ambidextrous
clip designed for duty belts; features
anti-assailant retention device



with Austrian Steel

14125BK-1
14125BK

\$85
\$85

BLACK
BLACK

BLADE LENGTH

2.90" (7.37cm)

HANDLE THICKNESS

0.54" (13.72mm)

OVERALL LENGTH

5.65" (14.35cm)

WEIGHT

2.37oz (67.19g)

FIXED



INSTIGATOR[®]

MECHANISM Fixed blade

BLADE STYLE Wharncliffe

BLADE STEEL AUS-8 stainless steel (58-60HRC)

HANDLE Skeletonized

SHEATH Includes neck lanyard

14536BP

\$55

BLACK

BLADE LENGTH

3.28" (8.33cm)

HANDLE THICKNESS

0.12" (3.05mm)

OVERALL LENGTH

7.38" (18.75cm)

WEIGHT

2.30oz (65.20g)

FIXED



NEW FEINT

MECHANISM Fixed blade

BLADE STYLE Drop-point

BLADE STEEL 440C stainless steel (58-60HRC)

HANDLE Black Santoprene®

SHEATH Includes nylon sheath with integrated blade guard



14120

\$135

BLACK

BLADE LENGTH
HANDLE THICKNESS
OVERALL LENGTH
WEIGHT

9.50" (24.13cm)

1.25" (31.75mm)

14.50" (36.83cm)

11.18oz (316.95g)

AXE



NEW CLOUT TACTICAL AXE

MECHANISM Fixed blade

BLADE STYLE Axe with hammer

BLADE STEEL 420J stainless steel

HANDLE Black textured glass-filled nylon

SHEATH Nylon with belt loop

14001

\$65

BLACK

BLADE LENGTH
OVERALL LENGTH

5.90" (14.99cm)

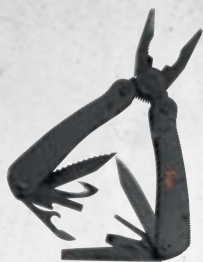
14.96" (38.00cm)

TOOLS/MISC.

ALLY COMBO

Combo packaged in a genuine HK pistol case.

14440SB-COMBO \$115



14441T



14440SB



14442L

MULTITOOLS/LIGHTS



UTILITY

Needle nose pliers, multiple blades, strap cutter, wire cutter and crimper, screwdriver, file and more. Carry pouch and 9-piece bit set included.

14441T.....\$45.00



TACTICAL

Needle nose pliers, knife blade, strap cutter, four-tooth front sight adjustment for AR-15 / M-16, shotgun choke key, cuff key and double-lock tool, file with scraping end, and saw blade. Carry pouch and 9-piece bit set included.

14443T.....\$80.00



100-Lumen LED Light

Advanced tactical light with 3 function settings: low / high / strobe. Max Run Time: 10 hours.

Batteries: 2 CR123 Lithium (not included)
14444L.....\$60.00



70-Lumen LED Light

LED flashlight with removable pocket clip. Max Run Time: 10 hours. Batteries: 3 AAA (not included)

14442L.....\$45.00

EXTRAS



Bring It Shirt

"The knife you bring to a gun fight."

Short-Sleeve tee, black. Made in USA

M, L, XL.....\$25.00



HK Cap

Adjustable Velcro® strap hat with embroidered red logo on front and embroidered white "Heckler & Koch" writing on back. 100% cotton.

986368F.....\$20.00



HK Knife Rack

984231F.....\$25.00



HK Kubaton

Anodized w/ Carbide Glass Breaker Tip and Key Ring

6000001-BLK.....\$25.00

6000001-PNK.....\$25.00

WARRANTY

LIMITED LIFETIME WARRANTY

Benchmade Knife Company, Inc. ("Benchmade") warrants to the original owner that this knife will be free from defects in materials and workmanship. Benchmade will, without charge, repair or replace, at Benchmade's option, any knife returned for warranty work and found to be defective by Benchmade, according to the terms of this Warranty. If we choose to replace the knife, we may replace it with the same model or one of equal value. The knife must be shipped by owner prepaid and insured freight, together with a description of the problem, and must be accompanied by the original bill of sale, your charge or credit card receipt or any satisfactory proof of the original date of purchase from a retail dealer. Any automatic knife returned for Warranty service from outside of Oregon must also include a signed Automatic Knife Opening Acknowledgment ("AKOA") form, or be returned through the authorized Benchmade dealer. Any automatic knife sent by you to us without a signed AKOA form will not be returned to you. To obtain an AKOA form, please visit www.benchmade.com NO EXCEPTIONS WILL BE MADE.

WHAT IS COVERED?

This Warranty covers replacement parts and labor.

WHAT IS NOT COVERED?

This Warranty does not cover normal wear, non-factory resharpener of the blade; cosmetic damages (such as scratches on the product); damage caused by neglect and/or misuse (meaning use of the knife for any purpose other than its intended purpose as a cutting tool); or the failure to perform normal or necessary maintenance. The Warranty does not cover disassembly or modification of any product by any person other than Benchmade's Warranty department. The Warranty does not cover damage incurred while in shipment; insurance for the product during shipping is recommended and is your responsibility. Do not use your new knife as a screwdriver, pry bar, chisel or punch. Do not throw your knife or use it for any purpose other than cutting. Do not disassemble your knife. Do not sharpen your knife on a power grinding wheel. Any of these acts will void your Warranty. MINIMUM CHARGE TO REASSEMBLE A KNIFE WHEN THE WARRANTY HAS BEEN VOIDED IS \$20 PLUS PARTS.

Repair or replacement, as provided under this Warranty, is the exclusive remedy of the consumer. HK or Benchmade shall not be liable for any incidental, reliance, indirect, special, punitive, exemplary, or consequential damages or breach of implied Warranty on this product, including any damage to person or property. Benchmade's liability under any and all circumstances is limited to the purchase price paid by you for the product. Some states do not allow exclusion or limitation of certain types of damages, so the above limitations or exclusions may not apply to you. This Warranty gives you specific legal rights, and you may also have other rights, which vary from state to state.

This knife has only one use, as a cutting tool. HK knives carry no warranty except as expressly contained herein. HK and Benchmade disclaim all warranties of merchantability and fitness for a particular purpose other than for use as a cutting tool.

Please review the Warranty information and proper knife care instructions provided with each knife.

ORDERING OF AUTOMATIC KNIVES

Automatic knives are available for sale in Oregon. The sale of automatic knives is federally regulated. Always check permissibility within your state or locality as non-federal personnel may be precluded from ownership or use by state laws. NO EXCEPTIONS WILL BE MADE. Purchase of automatic knives outside of the state of Oregon must be preceded by the submission of an AKOA form.

QUESTIONS ABOUT KNIFE LAWS IN YOUR STATE? VISIT WWW.STATEKNIFELAWS.COM.

The following are trademarks or registered trademarks of Benchmade Knife Company, Inc. or trademarks or registered trademarks of Mentor Group, L.L.C. and used under license: Ally; AXIS; Benchmade; Benchmade (butterfly logo); Benchmade (wordmark logo); Blitz; Conspiracy; Epidemic; Genuine AXIS Mechanics (logo); Instigator; Nitrous; Pika; Scorch; Soldat; Tumult; Turmoil; Dispatch. • NOTE: We reserve the right to make any design and/or material modifications without prior notice. • Benchmade products may be manufactured under one or more of the following patents: 5,737,841 (AXIS, Auto AXIS, AXIS Assist); 5,755,035 (Liner Lock); 5,822,866 (Automatic); 6,122,829 (AXIS); 6,438,848 (Auto AXIS); US RE 41,259 E (AXIS, Auto AXIS, AXIS Assist); 7,278,213 (Automatic, Liner Lock); 7,293,360 (Nitrous Bali-Song, Nitrous Liner Lock, Nitrous Lockback); 7,305,768 (Monolock); 7,305,769 (Out The Front); 7,409,766 (Lockback); 7,562,454 (Nitrous Bali-Song, Nitrous Liner Lock, Nitrous Lockback); 7,562,455 (Out The Front); 7,748,122 (AXIS Assist); 8,171,645 (AXIS Assist); 8,375,590 (AXIS Assist); 8,572,851 (AXIS Assist); 8,646,184 (Dual Taper Manual Push Button); Chinese Patent Nos. ZL 98813962.6 (AXIS), ZL 03106473.6 (AXIS), ZL 200680020710.4 (Auto Assist); French Patent Nos. 1071546 (AXIS); German Patent Nos. 1071546 / 69821034.4-08 (AXIS); Hong Kong Patent No. HK1037344 (AXIS); Italian Patent Nos. 1071546 (AXIS); Japanese Patent Nos. 3639990 (AXIS), 4225896; Taiwanese Patent Nos. 247653 (Assist). Other Patents Pending.

SHIPPING OF AUTOMATIC KNIVES

All automatic knives shipped by Benchmade will be sent via courier (UPS, FedEx, etc.) and CANNOT be shipped through the U.S. Postal Service. Also, please note that all returns of automatic knives must be shipped via courier (UPS, FedEx, etc.). It is our policy that all automatic knives shipped out of state require a signed AKOA form. We will not ship automatic knives out of state until we receive a signed AKOA form.

ARE HK ASSIST-OPEN KNIVES LEGAL?

Because of the way that the Benchmade assist-open knives are designed and built, they are not considered automatic or switchblade knives under federal interpretations.

Even though the HK assist-open models are not classified as automatics or switchblades, it is still recommended that the user research and verify the legalities in their own specific areas.

COMPLIANCE WITH LAWS, ASSUMPTION OF RISK, RELEASE OF LIABILITY, INDEMNITY

The purchase, use, and ownership of knives is subject to a wide variety of federal, state, and local laws and regulations. Knife laws and regulations are subject to local interpretations and may change frequently. It is the responsibility of the buyer to be aware of and to comply with the laws that govern the buyer in the buyer's specific area, pertaining to owning, carrying, transporting, shipping, and using the product.

We encourage responsible ownership.

THE KNIFE IS VERY SHARP. USE WITH CARE. BE SMART AND SAFE. KEEP OUT OF REACH OF CHILDREN. MISUSE OF THE PRODUCT OR FAILURE TO PROPERLY MAINTAIN YOUR PRODUCT CAN CAUSE MECHANISMS IN THE PRODUCT TO NOT FUNCTION PROPERLY AND COULD CAUSE DAMAGE TO THE PRODUCT AND/OR SERIOUS INJURY OR EVEN DEATH.

You expressly release Benchmade and HK from, and you expressly agree to indemnify and hold harmless Benchmade and HK for, all claims, damages, liabilities, losses, and expenses (including reasonable attorneys' fees) resulting directly or indirectly from your purchase, ownership, transportation, shipment, use, or misuse of your product in violation of any federal, state, or local law, rule, or regulation. Except for the express product Warranty provided herein, Benchmade and HK will not be held responsible or liable for your purchase, ownership, transportation, shipment, use, or misuse of any Benchmade or HK product purchased, either directly from Benchmade or HK or from any retail dealer.

PRICING

Every effort is made to ensure the accuracy of the prices and information presented in this catalog. However, we reserve the right to rectify any and all errors prior to any sale transactions. Prices shown are at suggested retail (U.S. currency). Actual purchase prices may vary. All pricing and product specifications are subject to possible change without prior notice. Visit hk-knives.com for the latest information.

SHARPENING SERVICE

We will gladly resharpen your knife to a factory edge (does not apply to serrated portion of the blade). Ship us your knife postage-paid and include a completed LifeSharp form found online:

benchmade.com/lifesharp

Send your knife to: HK Knives, Attn: Service Department, 300 Beaver Creek Rd., Oregon City, OR 97045 USA.



300 BEAVERCREEK ROAD
OREGON CITY, OR 97045

TELEPHONE

800.800.7427
503.655.6004

EMAIL

info@benchmade.com

WEB

www.hk-knives.com

PRSR STD
US POSTAGE
PAID
OREGON CITY, OR
PERMIT NO. 25

