

BLANK PAGE



ICONS OF INNOVATION.

Merely calling them packages seems so inadequate. They are more like icons of innovation. Those familiar with Benchmade have come to worship their presence almost as much as their contents. Expect more. It's Benchmade.

MODEL FEATURE CODES

These codes appear after the Benchmade model specific numbers. They identify particular feature variations within each model. (Example: Model 140SBK is a Model 140 knife which features partially serrated ComboEdge and BK1 black corrosion resistant coating on the blade).

(NO CODE) Plain edge/no blade coating

BK	Plain edge/BK1 black corrosion resistant coated blade
BLK	Black color handle
BLU	Blue color handle
BPI	Plain edge/BPI charcoal color scratch resistant coated blade
CP	Clam pack
D2	D2 steel, BK1 black corrosion resistant coated blade
DM	Damascus steel
DS	Dual Sheath (two pockets)
HS	M2 steel, plain edge/BK2 black corrosion resistant coated blade
HSSR	M2 steel, ComboEdge/BK1 black corrosion resistant coated blade
H20	X15 T.N steel, 100% corrosion resistant
OD	Olive Drab color handle
P	Mother-of-Pearl
RED	Red color handle
S	ComboEdge, partially serrated/no blade coating

SBK	ComboEdge, partially serrated/BK1 black corrosion resistant coated blade
SBKSL	ComboEdge/BK1 black corrosion resistant coated blade and Skyline Camouflage™ patterned handle
SLV	Silver color handle
SN	Sand color handle
T	Trainer blade
TR	Trainer with red handle
W	Soft sheath for the Rescue Hook
YEL	Yellow color handle

TABLE OF CONTENTS

GOLD CLASS	3 - 5
BLUE CLASS FOLDERS	6 - 17
BLUE CLASS FIXED BLADES	18 - 20
BLUE CLASS BALI-SONGS	21
BLACK CLASS FOLDERS	22 - 24
BLACK CLASS FIXED BLADES	25 - 27
RED CLASS FOLDERS	28 - 32
RED CLASS FIXED BLADES	32 - 35
WHAT'S IN A KNIFE?	37
FORWARD THINKING	38 - 39
INNOVATIONS IN MOVEMENT	40 - 41
ADVANCED MATERIALS	42 - 44
EXTRAS	45 - 48

Hello,

Thank you for your interest in Benchmade Knife Company and I would like to welcome you to the 2005 Benchmade Catalog. For those of you new to Benchmade, please take some time to read through the catalog and really find out what we are all about. And for you current Benchmade customers, I know you will be excited with everything we've done for you inside. From new designs to new finishes and materials, we are continuing to bring innovation to the market.

The past year was certainly an exciting one. We were very busy expanding our capabilities so that we can not only fulfill orders destined to our Armed Forces and Law Enforcement organizations, but also supply the premier daily carry tool that so many have come to rely on. Additionally, we continued in our progression towards a lean manufacturing environment. This endeavor will ultimately ensure even better service on a wider range of products.

I am thrilled with everything that we have coming for 2005. One of our main objectives is to focus our efforts on every aspect of the product and services we provide to make certain your experience with Benchmade will be a positive one. It truly is your enthusiasm that energizes us to push the form and function of specialty cutlery to uncharted territories. Expect more. It's Benchmade.

Les de Asis
Founder and Owner

BENCHMADE®



LES AND HIS SON
JON OUT ON THE
MANUFACTURING FLOOR.

GOLD CLASS

Custom designs, exotic materials, exclusive mechanisms and handcrafted detail are merely suggestions to the possibilities. The Benchmade Gold Class is not for everyone. It's for those individuals who aspire for life's great treasures, and know how to get it.

CUSTOM



A KNIFE FOR THE REAL BLADE CONNOISSEUR

Erasing the lines between custom and manufactured, the Benchmade Gold Class is a matter of satisfying the ultimate desire. Whether it is embellishing existing designs to loftier heights, creating entirely new ones, or even crafting a one of a kind experience from a collector's wish list, the Gold Class clearly sets the new standard of knife manufacturing. It's where the gloves come off, and the personal touch shapes imagination into reality.

940DM, 706, 910TI

These are just 3 of the exemplary specimens of the finer class of edge artistry, which were offered in 2004. The 940DM with its obvious distinction of Thunderforge® Damascus steel throughout, proved to be a highly coveted piece. Onto the 706 with high-polished titanium handle scales and Opal Cabachon details that classed it up a bit. And the third was the 910TI, which took one of our tougher tactical designs and made it a single punch knockout tip to tail. Gold is considered a precious metal, and we do our best to keep it that way.



4501 PRESTIGEDGES® DE ASIS

An edge so telling it's in the name (pronounced "prestigious") is nothing less than a redefinition of the finest in kitchen cutlery. A throwback to purity of design yet fashioned with a progressive appreciation of modern age materials and technologies for their premium performance qualities. The solid, one-piece blade design offers arguably the finest cutting edge available in the world today combined with classic elegance in visual and balanced functional detail. It's the epitome of "the essence of edge."

PRESTIGEDGES - Blade Material: Single Piece, Full-Tang 440C Stainless Steel Hardened to 58-60HRC; Handle: Impregnated Real Wood Laminate; Woven Micarta Bolster; Nickel/Silver Rivet Assembly

PARING KNIFE - Blade Length: 3.50" (8.89cm); Thickness: 0.0725" (1.84mm); Overall Length: 7.09" (18.01cm); Weight: 2.10oz (60gm)

UTILITY KNIFE - Blade Length: 6.00" (15.24cm); Thickness: 0.120" (3.05mm); Overall Length: 10.25" (26.04cm); Weight: 4.80oz (136gm)

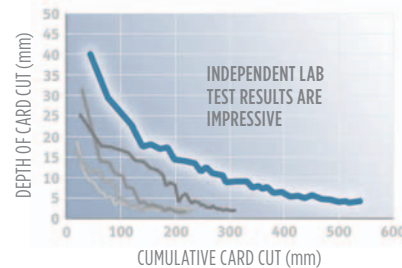
CHEF KNIFE - Blade Length: 8.00" (20.32cm); Thickness: 0.1415" (3.59mm); Overall Length: 13.00" (33.00cm); Weight: 8.50oz (241gm)

Available Blade Configuration
4501 (available only as three knife set)



—3-KNIFE SET COMES
IN ATTRACTIVE
PRESENTATION CASE

BENCHMADE OUTPERFORMED THE WORLD'S
FINEST BY NEARLY DOUBLE THE EDGE QUALITY.



INNOVATION



BLUE CLASS

Staying true to blue, the Blue Class represents the heart of everything that is Benchmade. For years it's been where people have come to expect greatness. Whether it's folders or fixed blades, the Blue Class knife is designed and built for the individual who appreciates the difference a high-quality cutting tool can make.

425 GRAVITATOR™ SNODY

NEW! You can feel its pull from across the room. No fantasies here though, the 425 is the real deal. Hands oblige to the sculpted shape of a titanium frame and its solid blade mechanics, which are flawlessly shrouded with machined, multi-G10 scales. Added detailing with steel barrel spacers helps to shape the future. A distinctive blade shape is all about edge— tip to tang. Go ahead, pick it up and experience the G-forces for yourself.

MODEL 425 GRAVITATOR - Designer: Mike Snody; Blade Material: 154CM Stainless Steel Hardened to 58-60HRC; Length: 3.50" (8.90cm); Thickness: 0.145" (3.68mm); Open: 8.28" (21.03cm); Closed: 4.77" (12.12cm); Weight: 4.50oz (127.57gm); Handle: Black G10 Scales with Silver G10 Bolsters, Double Thick Titanium Liners, Removable Steel Carry-Clip; Handle Thickness: 0.587" (14.91mm); Lock Mechanism: Modified Locking-Liner; Blade Style & Opener: Modified Wharncliff, Ambidextrous Thumb Stud

Available Blade Configurations

425 • 425S • 425BK • 425SBK

MODEL 425

MODEL 425BK



440 OPPORTUNIST™ OSBORNE

NEW! You're only as old as you feel.

An exterior of jugged aluminum handle scales with “woody” side panels, and the stylish, silvery blade project a timeless impression of class. Rekindle the spirits of old “friends”, or begin new with the inspiration of this timeless necessity.

MODEL 440 OPPORTUNIST - Designer: Warren Osborne; Blade Steel: S30V Stainless Steel Hardened to 58-60HRC; Length: 2.99” (7.59cm); Thickness: 0.114” (2.90mm); Open: 6.83” (17.35cm); Closed: 3.34” (8.48cm); Weight: 1.70oz (48.20gm); Handle: Anodized 6061-T6 Aluminum with Jig Pattern, Stabilized Wood Scales, 420J Liners; Handle Thickness: 0.485” (12.32mm); Lock Mechanism: Modified Locking-Liner; Blade Style & Opener: Modified Wharnciff, Thumb Stud

Available Blade Configuration
440



MODEL 440



MODEL 707

MODEL 707SBK

707 SEQUEL™

MCHENRY & WILLIAMS

NEW! (REBORN) Wishes really do come true. Benchmade fans will recognize it as a slimmed down 705 with a pumped up blade shape for new found utility. Aircraft grade aluminum scales with G10 inlays redress a leaner profile. As an everyday carry it offers an agility, which easily stymies its closest competitors. It's all good!

MODEL 707 REVAMP - Designers: Bill McHenry & Jason Williams; Blade Steel: 154CM Stainless Steel Hardened to 58-60HRC; Length: 2.95” (7.50cm); Thickness: 0.120” (3.05mm); Open: 6.75” (17.15cm); Closed: 3.80” (9.67cm); Weight: 2.60oz (73.70gm); Handle: 6061-T6 Aluminum with Black G10 Inlays, Double Thick 410 Liners, Reversible Stainless Steel Carry-Clip; Handle Thickness: 0.420” (10.67mm); Lock Mechanism: AXIS Lock; Blade Style & Opener: Modified Clip Point, Dual Thumb Stud

Available Blade Configurations
707 • 707S • 707SBK

630 SKIRMISH™ BLACKWOOD

The 630 Skirmish precedes any formal introduction— it introduces itself. More surprising than the robust stature though, is how well it handles for its size. The stylish blade form of S30V is physically balanced nicely off the titanium handles, and the looks certainly do not detract. With the 630 Skirmish, size does matter.

MODEL 630 SKIRMISH - Designer: Neil Blackwood; Blade Material: S30V Stainless Steel Hardened to 58-60HRC; Length: 4.3" (11.43cm); Thickness: 0.160" (4.06mm); Open: 9.70" (24.45cm); Closed: 5.50" (13.97cm); Weight: 6.84oz (195.61gm); Handle: Bead Blast/Anodized 6AL 4V-Titanium Scales; Removable Steel Custom Carry-Clip; Handle Thickness: 0.47" (1.19cm); Lock Mechanism: Monolock; Blade Style & Opener: Modern Reverse Curve Interpretation; Ambidextrous Thumb-Holes

Available Blade Configuration
630



MODEL 630



MODEL 635

635 MINI-SKIRMISH BLACKWOOD

NEW! Try this one on for size. It's every bit the 630 with a few less steroids. The 635 with its titanium-framed monolock competes with all, but compares with none. So silky smooth, yet so rigidly prudent in securing the blade. A contemporary blade shape presents a sporty edge. The anticipation is over!

MODEL 635 MINI-SKIRMISH - Designer: Neil Blackwood; Blade Steel: S30V Stainless Steel Hardened to 58-60HRC; Length: 3.43" (8.71cm); Thickness: 0.130" (3.30mm); Open: 7.73" (19.63cm); Closed: 4.30" (10.92cm); Weight: 3.92oz (111.13gm); Handle: Bead Blast 6AL 4V-Titanium Scales, Removable Steel Custom Carry-Clip; Handle Thickness: 0.435" (11.05mm); Lock Mechanism: Monolock; Blade Style & Opener: Modern Reverse Curve Interpretation, Ambidextrous Thumb Holes

Available Blade Configuration
635

670 APPARITION® OSBORNE

It really does exist. Rich textures. Bold contrasts. Smooth lines. It's a sight to behold. True vision, though, comes in the Optimiser® mechanics (see page 41). YOU control its destiny. Inject the spring rod and it's blade appears quicker. Drop the rod, things return to normal. You choose the blade speed.

MODEL 670 APPARITION - Designer: Warren Osborne; Blade Material: 154CM Stainless Steel Hardened to 58-60HRC; Length: 3.40" (8.64cm); Thickness: 0.120" (3.05mm); Open: 7.82" (19.86cm); Closed: 4.39" (11.15cm); Weight: 4.50oz (127.57gm); Handle: Cast Stainless Steel Bolster; Molded Scales; Double 6AL-4V Titanium Liners; Removable Steel Carry-Clip; Handle Thickness: 0.57" (1.45cm); Lock Mechanism: Modified Locking-Liner w/ Optimiser; Blade Style & Opener: Wharncliff; Thumb-Stud

Available Blade Configuration
670 • 670S



MODEL 670



MODEL 420SBK

MODEL 420

420 RESISTOR® SNODY

Designed with all of the girth and grit to get it done. The unique blade style not only catches the eye, it delivers all the edge you need. Black G10 handle skins are "machineengineered" to provide optimum palm swell and finger tread in both good and bad times. Take a walk on the wild side.

MODEL 420 RESISTOR - Designer: Mike Snody; Blade Material: 154CM Stainless Steel Hardened to 58-60HRC; Length: 3.75" (9.50cm); Thickness: 0.150" (3.81mm); Open: 8.00" (20.32cm); Closed: 4.66" (11.84cm); Weight: 5.70oz (161.59gm); Handle: Anodized Aluminum w/ G10 Over Scales; Double 420J Liners; Movable Steel Carry-Clip; Handle Thickness: 0.72" (1.83cm); Lock Mechanism: AXIS Lock; Blade Style & Opener: Gotham Swedged Clip-Point; Ambidextrous Thumb-Studs

Available Blade Configurations
420 • 420S • 420SBK

960

OSBORNE

Glossy metallic profiles of red or silver tempt the senses and energize the soul. Witness an unrivaled revelation of pure performance engineering in every detail. You won't be lead astray.

MODEL 960-RED - Designer: Warren Osborne; Blade Material: D2 Tool Steel Hardened to 58-60HRC; Blade Length: 3.12" (7.92cm); Thickness: 0.100" (2.54mm); Open: 7.28" (18.49cm); Closed: 4.16" (10.57cm); Weight: 2.26oz (64.50gm); Handle: Color Anodized 6061-T6 Aluminum with Black G10 Inlays, Double 420 Stainless Steel Inset Liners, Blue Anodized Titanium Backspacer, Reversible Steel Carry-Clip; Handle Thickness: 0.3675" (0.93cm); Lock Mechanism: AXIS Lock; Blade Style & Opener: Modified Drop-Point, Ambidextrous Dual Thumb-Studs

Available Blade Configurations
960-RED • 960-SLV



MODEL 960-RED

MODEL 960SLV



MODEL 921

MODEL 923SBK

921 & 923 SWITCHBACK® OSBORNE

NEW! 923 A dual blade offering that incorporates the unrivaled AXIS actuated S30V main blade and a slip-jointed 440C second blade out the back end. With plenty of cool in between to satisfy all the senses.

MODEL 921 & 923 SWITCHBACK - Designer: Warren Osborne; Main Blade- Blade Material: S30V Stainless Steel Hardened to 58-60HRC; Length: 3.40" (8.64cm); Thickness: .115" (2.92mm); Open: 7.87" (19.99cm); Small Blade- Blade Material: 440C Stainless Steel Hardened to 58-60HRC; Length: 2.00" (5.08cm); Thickness: .115" (2.92mm); Open: 7.87" (19.99cm); Knife Closed: 4.47" (11.35cm); Weight: 2.90oz (82gm); Handle: Color Anodized 6061-T6 Aluminum, Double 410 Stainless Steel Liners; Handle Thickness: 0.41" (1.04cm); Lock Mechanism: AXIS Lock; Slip-Joint (Small Blade); Blade Style & Opener: 921 Wharncliff, 923 Mod. Reverse Tanto, Ambidextrous Dual Thumb-Stud; Nail-Nick (Small Blade)

Available Blade Configurations
921 • 921-BLK



923SBK



THE SECOND BLADE'S PRACTICAL
DESIGN TRANSLATES INTO
USEFUL HARDWARE—

710

MCHENRY & WILLIAMS

It's the stuff legends are made of—the knife design that started the AXIS revolution! A modern clip-point blade interpretation puts the slice back into the utility blade, and the reverse curve edge adds cutting efficiency. Its design continues to impress.

MODEL 710 - Designers: Bill McHenry & Jason Williams; Blade Material: 154CM Stainless Steel Hardened to 58-60HRC or M2 High-Speed Steel Hardened to 60-62HRC; Length: 3.90" (9.90cm); Thickness: 0.115" (2.92mm); Open: 8.80" (22.34cm); Closed: 4.90" (12.44cm); Weight: 4.50oz (128gm); Handle: Black G10 Scales, Double 410 Stainless Steel Liners; Movable Steel Carry-Clip; Handle Thickness: 0.48" (1.22cm); Lock Mechanism: AXIS Lock; Blade Style & Opener: Modified Clip-Point, Dual Thumb-Stud

Available Blade Configurations

710 • 710S • 710SBK • 710HS • 710HSSR



MODEL 710

MODEL 710SBK



MODEL 732SBK

MODEL 732BK

732 ARES™

A reputable design which has more than proven itself as a superior cutting tool. The spear-point blade shape delivers plenty of usable edge, and the AXIS mechanics deliver smooth ambidextrous function everytime. The Ares name is of mythical legend and the 732 wears it proudly.

MODEL 732 ARES - Blade Material: 154CM Stainless Steel Hardened to 58-60HRC; Length: 3.60" (9.14cm); Thickness: 0.114" (2.90mm); Open: 8.20" (20.83cm); Closed: 4.70" (11.94cm); Weight: 4.40oz (125gm); Handle: Black G10 Scales, Double 410 Stainless Steel Liners; Movable Steel Carry-Clip; Handle Thickness: 0.56" (1.43cm); Lock Mechanism: AXIS Lock; Blade Style & Opener: Modified Spear-Point, Ambidextrous Dual Thumb-Stud

Available Blade Configurations

732BK • 732SBK

940 & 943

OSBORNE

A progression in design exemplified in glassy smooth function and stealthy structure. Unsurpassed AXIS mechanics are sent in motion with a thumb flick of the ambidextrous opener stud. From chores around your urban world to adventurous exploration outdoors, make the cut—go 940.

MODEL 940 - Designer: Warren Osborne; Blade Material: 154CM Stainless Steel Hardened to 58-60HRC; Length: 3.40" (8.64cm); Thickness: 0.115" (2.92mm); Open: 7.87" (19.99cm); Closed: 4.47" (11.35cm); Weight: 2.90oz (82gm); Handle: Green Color Anodized 6061-T6 Alum.; Double 410 Stainless Steel Liners, Color Anodized Titanium Back Spacer; Movable Steel Carry-Clip; Handle Thickness: 0.41" (1.04cm); Lock Mechanism: AXIS Lock; Blade Style & Opener: Modified Reverse Tanto, Ambidextrous Dual Thumb-Stud

Available Blade Configurations

940 • 940S • 940SBK

MODEL 943 - Designer: Warren Osborne; Blade Material: 154CM Stainless Steel Hardened to 58-60HRC; Length: 3.40" (8.64cm); Thickness: 0.115" (2.92mm); Open: 7.87" (19.99cm); Closed: 4.47" (11.35cm); Weight: 2.62oz (74gm); Handle: Black Color Anodized 6061-T6 Alum.; Double 410 Stainless Steel Liners, Color Anodized Titanium Back Spacer; Movable Steel Carry-Clip; Handle Thickness: 0.41" (1.04cm); Lock Mechanism: AXIS Lock; Blade Style & Opener: Straight Clip-Point, Ambidextrous Dual Thumb-Stud

Available Blade Configurations

943 • 943S • 943SBK



MODEL 940

MODEL 940SBK



MODEL 943SBK

MODEL 943

550 GRIPTILIAN® 555 MINI-GRIPTILIAN

PARDUE

It's a new species of knife, and represents the AXIS entry level in Benchmade style. A combination of modified sheepfoot blade, molded handle design and the AXIS advantage team up for one of the best knife values on the market today. So don't hold back— *GET A GRIP!*

MODELS 550 GRIPTILIAN - Designer: Mel Pardue; Blade Material: 440C Stainless Steel Hardened to 58-60HRC; Length: 3.45" (8.76cm); Thickness: 0.115" (2.92mm); Open: 8.07" (20.50cm); Closed: 4.62" (11.73cm); Weight: 3.25oz (92gm); Handle: Black Glass Fill Noryl GTX®/Color Valox®; Double 410 Stainless Steel Liners; Reversible Steel Carry-Clip; Handle Thickness: 0.64" (1.63cm); Lock Mechanism: AXIS Lock; Blade Style & Opener: Model 550— Modified Sheepfoot; Ambidextrous Oval Thumb-Hole

Available Blade Configurations

550 • 550S • 550SBKOD • 550SBK • 550SBKSL • 550SBKSN • 550T • 550/SW

MODEL 555 MINI-GRIPTILIAN - Designer: Mel Pardue; Blade Material: 440C Stainless Steel Hardened to 58-60HRC; Length: 2.91" (7.38cm); Thickness: 0.100" (2.54mm); Open: 6.78" (17.21cm); Closed: 3.87" (9.82cm); Weight: 2.56oz (73gm); Handle: Color Valox®; Double 410 Stainless Steel Liners; Reversible Steel Carry-Clip; Handle Thickness: 0.51" (1.30cm); Lock Mechanism: AXIS Lock; Blade Style & Opener: Model 555— Modified Sheepfoot; Ambidextrous Oval Thumb-Hole

Available Blade Configurations

555 • 555-BLU • 555-YEL • 555S • 555S-BLU • 555S-YEL • 555SBK • 555BKOD • 555SBKOD

MODEL 550



MODEL 555S



550SBKSN

550SBKOD



550SBKSL



550T



550/SW

551 GRIPTILIAN® 556 MINI-GRIPTILIAN

PARDUE

Same great Griptilian features with a modified drop-point blade and dual thumb-stud openers. Griptilian performance is keenly unleashed with a simple thumb rotation, either right or left handed, you choose. And with two sizes available let your animal instincts kick-in, and decide which one is right for you. *Grrrr!*

MODELS 551 GRIPTILIAN - Designer: Mel Pardue; Blade Material: 440C Stainless Steel Hardened to 58-60HRC; Length: 3.45" (8.76cm); Thickness: 0.115" (2.92mm); Open: 8.07" (20.50cm); Closed: 4.62" (11.73cm); Weight: 3.25oz (92gm); Handle: Black Glass Fill Noryl GTX®/Color Valox®; Double 410 Stainless Steel Liners; Reversible Steel Carry-Clip; Handle Thickness: 0.64" (1.63cm); Lock Mechanism: AXIS Lock; Blade Style & Opener: Model 551— Modified Drop-Point; Dual Thumb-Stud

Available Blade Configurations

551 • 551S • 551SOD • 551SBK • 551SBKSL • 551SBKOD • 551SBKSN • 551T • 551/SW

MODEL 556 MINI-GRIPTILIAN - Designer: Mel Pardue; Blade Material: 440C Stainless Steel Hardened to 58-60HRC; Length: 2.91" (7.38cm); Thickness: 0.100" (2.54mm); Open: 6.78" (17.21cm); Closed: 3.87" (9.82cm); Weight: 2.56oz (73gm); Handle: Color Valox®; Double 410 Stainless Steel Liners; Reversible Steel Carry-Clip; Handle Thickness: 0.51" (1.30cm); Lock Mechanism: AXIS Lock; Blade Style & Opener: Model 556- Modified Drop-Point; Dual Thumb-Stud

Available Blade Configurations

556 • 556-BLU • 556-YEL • 556OD • 556S • 556S-BLU • 556S-YEL • 556SBK • 556SBKOD

MODEL 551S



MODEL 556



551SBKOD

551SBKSN



551SBKSL



551T



551/SW

553 GRIPTILIAN® TANTO 557 MINI-GRIPTILIAN TANTO

PARDUE

NEW! Representing another progression in Griptilian genealogy with its tanto blade style it purposefully adds to the growing appeal of this enhanced species of knife design. Tip strength is definitely prioritized followed by an angular razor cutting edge in this unique blade interpretation. And just like its precursors, you can grip your tanto in two different sizes, too.

MODEL 553 GRIPTILIAN TANTO - Designer: Mel Pardue; Blade Steel: 440C Stainless Steel Hardened to 58-60HRC; Length: 3.45" (8.76cm); Thickness: 0.114" (2.90mm); Open: 8.07" (20.50cm); Closed: 3.87" (9.83cm); Weight: 3.25oz (92.14gm); Handle: Black Glass Fill Noryl GTX®/Color Valox®, Double Thick 410 Stainless Steel Liners, Reversible Steel Carry-Clip; Handle Thickness: 0.64" (16.26mm); Lock Mechanism: AXIS Lock; Blade Style & Opener: Tanto, Dual Thumb Stud

Available Blade Configurations

553 • 533S • 553SBK

MODEL 557 MINI-GRIPTILIAN TANTO - Designer: Mel Pardue; Blade Steel: 440C Stainless Steel Hardened to 58-60HRC; Length: 2.90" (7.37cm); Thickness: 0.100" (2.54mm); Open: 6.78" (17.22cm); Closed: 3.87" (9.83cm); Weight: 2.67oz (75.70gm); Handle: Color Valox®, Double Thick 410 Stainless Steel Liners, Reversible Steel Carry-Clip; Handle Thickness: 0.51" (12.95mm); Lock Mechanism: AXIS Lock; Blade Style & Opener: Tanto, Ambidextrous Oval Thumb Hole

Available Blade Configurations

557 • 557S • 557SBK

MODEL 553SBK

MODEL 5570D



530 PARDUE

Go light— without giving up performance. Mel Pardue changed up one of his classic designs by shedding a few tenths of an ounce and adding the AXIS mechanism. The result is a new body style and a lightweight, go anywhere utility folder. It's great to be thin.

MODEL 530 - Designer: Mel Pardue; Blade Material: 440C Stainless Steel Hardened to 58-60HRC; Length: 3.25" (8.25cm); Thickness: 0.09" (2.28mm); Open: 7.42" (18.85cm); Closed: 4.17" (10.59cm); Weight: 1.88oz (53.28gm); Handle: Noryl GTX 830 Scales; Double 420J Liners; Removable Steel Carry-Clip; Handle Thickness: 0.366" (.930cm); Lock Mechanism: AXIS Lock; Blade Style & Opener: Modified Spear-Point; Ambidextrous Thumb-Studs

Available Blade Configurations

530 • 530S • 530SBK



MODEL 530SBK

MODEL 530



MODEL 690

MODEL 690BP1

690

Elevate your level of pocket hardware and clip in for cutting edge class. The 690 offers a physical representation of everything Benchmade, and allows you to express your intelligence in knowing a good thing when you see it. Steel, carbon fiber, wood, and titanium have never looked so good.

MODEL 690 - Blade Material: 154CM Stainless Steel Hardened to 58-60HRC; Length: 3.25" (8.26cm); Thickness: 0.133" (3.38mm); Open: 7.50" (19.00cm); Closed: 4.12" (10.50cm); Weight: 3.00oz (85gm); Handle: Black Carbon Fiber/Stabilized Rose Wood Scales; Double Blue Anodized Titanium Liners; Handle Thickness: 0.54" (1.38cm); Lock Mechanism: Modified Locking-Liner; Blade Style & Opener: Clip-Point; Movable Thumb-Stud

Available Blade Configurations

690 • 690BP1

210 ACTIVATOR® SNODY

It's magic. Bending lines and smooth surfaces converge to shape this contemporary cutting tool. Don't let its size fool you, the profile is well done and offers good grip control. The unique combination of exotic materials gives a solid pulse to the Activator. Favor it for the dynamic looks. Gratify in its practical utility.

MODEL 210 ACTIVATOR - Designer: Mike Snody; Blade Material: S30V Tool Steel Hardened to 59-61HRC; Length: 2.50" (6.35cm); Thickness: 0.140" (3.56mm); Overall: 6.50" (16.51cm); Weight: 2.50oz (70.87gm); Handle: Carbon Fiber Bolster w/ Silver G10 scales; Handle Thickness: 0.72" (0.97cm); Sheath: Deep-Pocket Textured Black Leather Belt-Carry; Weight: 1.50oz (42.52gm); Blade Style: Drop-Point Utility

Available Blade Configuration
210



MODEL 210

MODEL 100SH20-BLK



MODEL 100SH20

100SH20

A reality of performance fueled by the incessant exposure to liquid assets. The steel blade is impervious to the elements and highly corrosion resistant, even in salt water. Tip design is sharp enough to be useful, yet blunt enough to be predictable. And the modern sheath design escalates tool performance.

MODEL 100SH20 - Blade Material: X15 T.N Stainless Steel Hardened to 58-60HRC; Length: 3.23" (8.32cm); Thickness: 0.114" (2.90mm); Overall: 7.50" (19.50cm); Weight: 4.00oz (128gm); Handle: Full-Tang; Day-glow Yellow Kydex or Black G10 Scales; Handle Thickness: 0.58" (1.48cm); Sheath: Molded Kydex/Thermoplastic; Reversible Lash Tab Carry-Clip; Weight: 2.20oz (63gm); Blade Style: Modified Sheepfoot

Available Blade Configurations
100SH20 • 100SH20-BLK



—SHEATH ATTACHES TO
PFD VIA A LASH-TAB
CLIP ASSEMBLY

220 FIXED RESISTOR® SNODY

NEW! Introducing an amped anatomy of fixed blade style. Generous structural physics handily leverage utility to a fresh level of performance. Its skeletonized handle gives positive purchase to the digits, wet or dry. And a form fitted cavity of molded matter is engineered to carry the load over the long haul. You can't resist can you?

MODEL 220 FIXED RESISTOR - Designer: Mike Snody; Blade Steel: 154CM Stainless Steel Hardened to 58-60HRC; Length: 3.40" (8.64cm); Thickness: 0.160" (4.06mm); Overall: 7.45" (18.92cm); Weight: 4.56oz (129.27gm); Handle: Skeletonized G10 Scales; Handle Thickness: 0.51" (12.95mm); Sheath: Molded Kydex® w/Belt Loop; Blade Style: Gotham Swaged Clip-Point

Available Blade Configuration
220



MODEL 220

190 DROP-POINT HUNTER™

Unmasking the elusive qualities needed to handle the diversity of tasks demanded of a knife in the outdoor world. Sure handed control is a reality with contoured handles that fill the grip, and a pronounced finger guard keeps things safe. Performance as big as all outdoors. Pack your gear. Let's go!

MODEL 190 DROP-POINT HUNTER - Blade Material: 440C Stainless Steel Hardened to 58-60HRC; Length: 3.90" (9.91cm); Thickness: 0.125" (3.175mm); Overall: 8.00" (20.32cm); Weight: 4.50oz (128gm); Handle: Full-Tang; Contour Sculpted Stabilized Wood; Handle Thickness: 0.78" (1.98cm); Sheath: Stitched Leather with Belt Loop; Color Dyed; Snap Over Strap; Weight: 1.00oz (28gm); Blade Style: Drop-Point

Available Blade Configuration
190



MODEL 190



MODEL 180

180 OUTBOUNDER® MCHENRY & WILLIAMS

A refreshing retro to cutlery tradition with admirable modern overtones to enhance performance. The utility generous blade shape flows into a custom quality taper-tang for optimum balance and blade control. Get back to nature. Get the Outbouncer.

MODEL 180 OUTBOUNDER - Designers: Bill McHenry & Jason Williams; Blade Material: 440C Stainless Steel Hardened to 58-60HRC; Length: 3.75" (9.53cm); Thickness: 0.125" (3.18mm); Overall: 7.45" (18.92cm); Weight: 3.30oz (94gm); Handle: Full, Taper-Tang; Stabilized Hardwood Rose Color Scales; Handle Thickness: 0.56" (1.42cm); Sheath: Dyed Leather with Belt-Loop; Weight: 1.90oz (54gm); Blade Style: Drop-Point

Available Blade Configuration
180

42, 40TR BALI-SONG®

The roots run deep and the pride burns strong. Bali-Song and the butterfly are as much a part of Benchmade as the name itself. As an art form, steel blades move freely through a rhythmic motion of human manipulation. As a cutting tool, it's the convenience of a folder with the dynamics of a fixed blade. Either way, unless it has the signature butterfly on the blade— it isn't a real Bali-Song.

MODEL 42 BALI-SONG - Blade Material: 440C Stainless Steel Hardened to 58-60HRC; Length: 4.20" (10.67cm); Thickness: 0.125" (3.18mm); Overall: 9.40" (23.88cm); Closed: 5.20" (13.21cm); Weight: 4.10oz (116gm); Handle: Skeletonized Cast 6AL-4V Titanium; Handle Thickness: 0.51" (1.30cm); Lock: Integrated Spring Latch; Blade Style: Weehawk; Sheath: Soft; Belt Carry

Available Blade Configurations
42 • 42S

MODEL 40TR TRAINER - Same Size, Weight And Balance As Titanium Model 40 Series; Skeletonized Trainer Safe Blade

Available Blade Configuration
40T • 40TR

MODEL 42S

MODEL 42

MODEL 40TR





PERFORMANCE

BLACK CLASS

It represents the most commonly used knives by professionals where life and death situations are often all in a day's work, so the tools they use must be up to the challenge as well. From Law Enforcement and Public Safety to elite Military troops, our obligation is still the same, the best tools for the job. Imagine what they can do in your world.

520 PRESIDIO® PARDUE

Let your fingers settle in for a fulfilling prophecy of form following function. When it comes to cutting tools, the Presidio stands strong on all fronts like an impenetrable fortress in a world of wanna be contenders. Solid AXIS function, formidable blade utility, patented bi-directional handle tread design, and it's 100-percent ambidextrous. When the going gets tough, get tougher.

MODEL 520 PRESIDIO - Designer: Mel Pardue; Blade Material: 154CM Stainless Steel Hardened to 58-60HRC; Length: 3.42" (8.69cm); Thickness: 0.13" (3.30mm); Open: 8.25" (20.96cm); Closed: 4.87" (12.37cm); Weight: 5.64oz (159.89gm); Handle: 6061 T-6 Aluminum; Double 420J Liners; Movable Steel Carry-Clip; Handle Thickness: 0.64" (1.625cm); Lock Mechanism: AXIS Lock; Blade Style & Opener: Drop-Point; Ambidextrous Thumb-Studs

Available Blade Configurations
520 • 520S • 520SBK



MODEL 520

MODEL 520SBK

806D2 AFCK

Stainless steel, G10 and AXIS function converge into an almost immortal state of reality. Your hand tenaciously conforms to the predisposed curvature of the handle. A unique blade design opens up to run the gamut of cutting tool utility. Its brute beauty continues to prove itself worthy of distinction.

MODEL 806 AFCK - Blade Material: D2 Tool Steel Hardened to 59-61HRC; Length: 3.94" (10cm); Thickness: 0.124" (3.15mm); Open: 9.37" (23.80cm); Closed: 5.43" (13.79cm); Weight: 4.78oz (135gm); Handle: Black G10 Scales, Double 410 Stainless Steel Liners; Movable Steel Carry-Clip; Handle Thickness: 0.49" (1.25cm); Lock Mechanism: AXIS Lock; Blade Style & Opener: Black BK1 Coated Clip-Point, Ambidextrous Oval Thumb-Hole

Available Blade Configurations
806D2 • 806SD2



MODEL 806SD2

MODEL 806D2

MODEL 910SBK

MODEL 910

910 STRYKER®

An angular approach leads to blade geometry of monolithic proportion, and the Tanto is perhaps a misunderstood overachiever in efficiencies of cutting, too. Titanium liners up the ante in the patented modified locking-liner system. Ponder your options with a prodigy of cutting performance in the knife world.

MODEL 910 STRYKER - Blade Material: 154CM Stainless Steel Hardened to 58-60HRC or M2 High-Speed Steel 60-62HRC; Length: 3.70" (9.40cm); Thickness: 0.125" (2.46mm); Open: 8.25" (20.96cm); Closed: 4.68" (11.89cm); Weight: 3.80oz (108gm); Handle: Black G10 Scales, Double Titanium Liners; Removable Steel Carry-Clip; Handle Thickness: 0.48" (1.20cm); Lock Mechanism: Modified Locking-Liner; Blade Style & Opener: Modified Tanto, Ambidextrous Thumb-Disk

Available Blade Configurations
910 • 910S • 910SBK • 910HS • 910HSSR

155 FIXED PRESIDIO® OSBORNE

NEW! No contrived endorsements here. Don't need 'em. It's a pure interpretation of cutting efficiencies nicely engineered into a formidable fixed blade. A single piece, full-tang slab of steel proficiently machined with multiple serrations and a keen edge to easily go the distance in today's world. Aluminum handle scales are machined with a no-slip tread pattern do their part to carry the performance load of the business end. A soft sheath makes tool carry convenient.

MODEL 155 FIXED PRESIDIO - Designer: Warren Osborne; Blade Steel: 154CM Stainless Steel Hardened to 58-60HRC, BK1 Coated; Length: 6.20" (15.75cm); Thickness: 0.180" (4.57mm); Overall: 11.20" (28.45cm); Weight: 9.92oz (281.23gm); Handle: Full Tang, Black Anodized 6061 T-6 Aluminum Scales; Handle Thickness: 0.200" (5.08mm); Blade Style: Modified Clip-Point

Available Blade Configuration
155SBK

NOTE: SEE YOUR LOCAL DEALER
OR GO TO BENCHMADE.COM FOR
155 SHEATH INFORMATION

MODEL 155SBK



140 & 141 NIMRAVUS®

Keep your options open... Two modern tip designs tower like obelisks in an endless spew of would-be challengers. Their use of full-tang, premium grade steel consciously dissuades any fear of tool failure. Machine sculpted handle scales and protruding tang dish out a keen, tactile grip for finite control. Sheath design helps to bring out overall tool performance as well.

MODEL 140 & 141 NIMRAVUS - Blade Material: 154CM Stainless Steel Hardened to 58-60HRC or M2 High-Speed Steel Hardened to 60-62HRC; BK1® Coated; Length: 4.50" (11.43cm); Thickness: 0.115" (2.92mm); Overall: 9.45" (24.00cm); Weight: 6.20oz (175gm); Handle: Full-Tang; Black G10 Scales; Handle Thickness: 0.58" (1.48cm); Sheath: Molded Kydex®/Thermoplastic; Movable Belt-Loop of Santoprene® Rubber; Weight: 3.44oz (97gm); Blade Style: 140 Modified Tanto, 141 Tanto

Available Blade Configurations

140BK • 140SBK • 140HS • 140HSSR • 141BK • 141SBK



MODEL 140HS

MODEL 141SBK

5 & 6H2O RESCUE HOOK®

So many uses... *SO FAST!* Form and function collide with the deftness to save time, save effort and ultimately save lives. Readily slice through security belts, rope, clothing and a multitude of fibrous or pliable matter with light-speed quickness. A scalpel sharp edge is shrouded from inadvertent exposure to your surroundings. Put one in your world and get hooked for safety.

MODEL 5 RESCUE HOOK - Blade Material: 440C Stainless Steel Hardened to 54-58HRC; Blade Opening: 0.50" (1.27cm); Overall Length: 2.90" (7.37cm); Thickness: 0.113" (2.87mm); Weight: 1.20oz (34gm); Handle: Finger Hole 1.12" (2.85cm); Soft Sheath: Nylon Webbing Pouch/Velcro® Closure; Weight: 0.60oz (17gm); Hard Sheath: Molded Delrin® Snap-Fit (Varied Carry Options Available); Weight: 0.60oz (17gm)

Available Blade Configurations

5 • 5BLK • 5W • 5BLKW

MODEL 6H2O RESCUE HOOK - Blade Material: X15 T.N Stainless Steel Hardened to 58-60HRC; Blade Opening: 0.50" (1.27cm); Overall Length: 4.25" (10.80cm); Thickness: 0.113" (2.87mm); Weight: 2.30oz (65gm); Handle: Steel w/ Yellow Kydex Overlay; Hard Sheath: Molded Delrin Snap-Fit (Varied Carry Options Available); Weight: 0.60oz (17gm)

Available Blade Configuration

6H2O

FOR FINGER STYLE GRIP
AND COMPACTNESS.



MODEL 5



PART #981607

—OPTIONAL LASH-TAB
CARRY CLIP ASSEMBLY
AVAILABLE SEPARATELY

—CUTS QUICKLY, SAFELY AND
EFFECTIVELY WITH PULLING
MOTION



MODEL 5BLK

FOR FULL HAND GRIP AND
CORROSION RESISTANCE.



MODEL 6H2O



RED CLASS

Edged tools with the same Benchmade signature innovation and performance driven mindset, geared for the casual knife buyer. It's a commitment to be the "best in class" value, and initiates an entirely new group of knife users to the Benchmade performance difference.

VALUE

10600 SNIPE™ FECAS

NEW! Patented technology, performance, and value. Not a bad mix any way you add it up. On the upper dimension of mid-sized folders the 10600 features a generous cutting edge along its slender blade profile. Patented locking mechanics make in and out a simple movement. The “bumped” surface of the molded handle, grips as good as it grabs your attention, too. So much for so little!

Model 10600 SNIPE -Designer: Steve Fecas; Blade Steel: AUS 8 Stainless Steel Hardened to 58-60HRC; Length: 3.97” (10.08cm); Thickness: 0.089” (2.26mm); Length Open: 9.30” (23.62cm); Weight: 5.62oz (159.32gm); Handle: Molded Zytel®, Removable Steel Carry-Clip; Handle Thickness: 0.597” (15.16mm); Blade Style: Modified Drop Point

Available blade configurations

10600 • 10600S • 10600SB



10600SB



MODEL 10600S

MODEL 10600

10200 AMBUSH® 10210 MINI-AMBUSH

PARDUE

Two sizes, one objective— to exceed your options in performance at this price level. The unique advantages are the patented Rolling Lock® mechanism teamed with the InDraft™ system. Together they offer solid blade lock-up and positive blade closure. Handle materials vary with each, cast aluminum on the larger Ambush, and molded Zytel™ on the Mini. With these cool features and value, these knives are sure to ambush plenty of users pockets.

MODEL 10200 AMBUSH - Designer: Mel Pardue; Blade Material: AUS-8 Stainless Steel Hardened to 58-60HRC; Length: 3.94" (10.00cm); Thickness: 0.118" (3.00mm); Open: 9.26" (23.52cm); Closed: 5.36" (13.62cm); Weight: 5.5oz (155.92gm); Handle: Diecast Aluminum; Double 420J Liners; Reversible Steel Carry-Clip; Handle Thickness: 0.55" (1.408cm); Lock Mechanism: Rolling Lock®; Blade Style & Opener: Drop-Point Utility; Ambidextrous Thumb-Studs

Available Blade Configurations

10200 • 10200S • 10200SB

MODEL 10210 MINI-AMBUSH - Designer: Mel Pardue; Blade Material: AUS-8 Stainless Steel Hardened to 58-60HRC; Length: 2.96" (7.52cm); Thickness: 0.118" (3.00mm); Open: 6.95" (17.65cm); Closed: 3.98" (10.12cm); Weight: 2.56oz (73gm); Handle: Thermoplastic; Double 420J Liners; Reversible Steel Carry-Clip; Handle Thickness: 0.457" (11.62cm); Lock Mechanism: Rolling Lock®; Blade Style & Opener: Drop-Point Utility; Ambidextrous Thumb-Studs

Available Blade Configurations

10210 • 10210S • 10210SB



MODEL 10200

MODEL 10200S



10200SB



10210SB



MODEL 10210

MODEL 10210S

10400 PIKA® 10410 MINI-PIKA

The Pika namesake is a small mammal of several mountainous regions in the world, which just goes about its business everyday. And so do these knives. Indoors or out, the 10400 and 10410 with their 440C blade steel and molded Zytel handles deliver good, reliable performance. If you're looking to sharpen your gear bag on a budget, these models are too tough to pass by.

MODEL 10400 PIKA - Blade Material: 440C Stainless Steel Hardened to 58-60HRC; Length: 3.50" (8.89cm); Thickness: 0.115" (2.92mm); Open: 8.25" (20.95cm); Closed: 4.80" (12.18cm); Weight: 2.7oz (76.544gm); Handle: Thermoplastic; Movable Steel Carry-Clip; Handle Thickness: 0.453" (1.150cm); Lock Mechanism: Lock Back; Blade Style & Opener: Clip Point; Oval Hole

Available Blade Configurations

10400 • 10400S

MODEL 10410 MINI-PIKA - Blade Material: 440C Stainless Steel Hardened to 58-60HRC; Length: 2.90" (7.37cm); Thickness: 0.110" (2.79mm); Open: 6.95" (17.65cm); Closed: 4.00" (10.16cm); Weight: 1.8oz (51.03gm); Handle: Thermoplastic; Movable Steel Carry-Clip; Handle Thickness: 0.44" (1.11cm); Lock Mechanism: Lock Back; Blade Style & Opener: Clip Point; Oval Hole

Available Blade Configurations

10410 • 10410S

MODEL 10400

MODEL 10410



10300 MONOCHROME®

STEIRER EISEN

A debut design by one of our custom designers from Austria, this monolock has become a popular model for everyday carry. The N690 steel blade offers plenty of edge utility, and the stainless steel handles are low profile yet offer good grip. With the 10300 less is more... for less.

MODEL 10300 MONOCHROME - Designer: Steirer Eisen; Blade Material: N690 Stainless Steel Hardened to 58-60HRC; Length: 3.04" (7.72cm); Thickness: 0.125" (3.17mm); Open: 7.37" (18.72cm); Closed: 4.345" (10.04cm); Weight: 3.84oz (108.86gm); Handle: 420J Stainless Steel; Removable Steel Carry-Clip; Handle Thickness: 0.354" (.9cm); Lock Mechanism: Monolock; Blade Style & Opener: Drop-Point Utility w/ Dual Thumb-Studs

Available Blade Configurations

10300 • 10300S • 10300SB



MODEL 10300

MODEL 10300SB



MODEL 10530

10530 JUJU™

SNODY

NEW! A unique fixed blade design in the Japanese genre of form and function. The polished chisel ground blade flows into a cord wrapped handle with red colored ray skin. Also in the handle is a skull and bone design of a menuki for enhanced grip. And for carry, a molded sheath is done with a ray skin texture to compliment the knife.

MODEL 10530 JUJU - Designer: Mike Snody; Blade Steel: 440C Stainless Steel Hardened to 58-60HRC; Length: 4.75" (12.07cm); Thickness: 0.219" (5.56mm); Overall: 9.40" (24.87cm); Weight: 8.62oz (244.37gm); Handle: Japanese Cord Wrap, Ray Skin, Pewter Bone and Skull Menuki; Handle Thickness: 0.924" (23.47mm); Blade style: Modified Tanto

Available Blade Configurations

10530

10520 OFFSIDER™ FECAS

NEW! It's as functional as it is big. At just beyond 13-inches, the modified spear-point bladed knife with its near quarter-inch girth, is definitely a specimen of size. Molded handle scales are shaped and textured for proficient grip. It's a lot of fixed blade at a value minded price.

Model 10520 INFIDEL - Designer: Steve Fecas; Blade Steel: 440C Stainless Steel Hardened to 58-60HRC; Length: 7.13" (18.13cm); Thickness: 0.219" (5.56mm); Overall: 13.03" (33.10cm); Weight: 12.58oz (356.64gm); Handle: Thermoplastic Scales; Handle Thickness: 0.797"; Sheath: Soft Cordura® w/Multi-Pocket, Belt Carry; Blade Style: Modified Spear-Point

Available Blade Configurations
10520 • 10520SB



MODEL 10520

10500 RANT® BOWIE

PARDUE

High value, low priced innovation. Outdoorsmen will delight in the Bowie blade for its agility and excellent field utility. The Kraton® handle holds tough in the elements, and it caps off the patented BILT™ System.

MODEL 10500 RANT BOWIE - Designer: Mel Pardue; Blade Material: 440C Stainless Steel Hardened to 58-60HRC; Length: 3.95" (10.03cm); Thickness: 0.139" (3.53mm); Overall: 8.58" (21.79cm); Weight: 6.16oz (174.633gm); Handle: Polypropylene w/ Black Kraton® Overmold; w/ BILT System; Handle Thickness: 0.88" (2.23cm); Sheath: Black Leather w/ Belt-Loop; Blade Style: Clip-Point Bowie

Available Blade Configuration
10500



MODEL 10500



MODEL 10505

10505 RANT® DPT

PARDUE

Same value and innovation as in the other Rant design. The Rant DPT (Drop-Point Tactical) features a more utilitarian blade design to broaden its applications. Its 440C blade steel offers up plenty edge to cut through the competitions claims of greatness. Slip it into the ballistics nylon sheath (with sleeve) for easy belt carry.

BILT SYSTEM



REFER TO PG. 41 FOR DETAILS

MODEL 10505 RANT DPT - Designer: Mel Pardue; Blade Material: 440C Stainless Steel Hardened to 58-60HRC; Length: 4.48" (11.38cm); Thickness: 0.139" (3.53mm); Overall: 9.11" (23.14cm); Weight: 6.02oz (170.66gm); Handle: Polypropylene w/ Black Kraton® Overmold; w/ BILT System; Handle Thickness: 0.88" (2.23cm); Sheath: Black Ballistics Nylon w/ Belt Loop; Blade Style: Drop-Point

Available Blade Configuration
10505

10510 GAMER® FECAS

A slimmed down design with 2004 Best Buy honors from BLADE Magazine. Carries light and carries “quiet” if that’s your style. The 440C steel blade shape does well over a multitude of uses and the full-tang design balances nicely in the hand. Pressure fit molded sheath.

MODEL 10510 GAMER - Designer: Steve Fecas; Blade Material: 440C Stainless Steel Hardened to 58-60HRC; Length: 4.11” (10.44cm); Thickness: 0.117” (2.97mm); Overall: 8.84” (22.45cm); Weight: 3.58oz (101.491gm); Handle: Thermoplastic; Handle Thickness: 0.425” (1.08cm); Sheath: Black Thermoplastic w/ Multiple Carry Options; Blade Style: Clip-Point

Available Blade Configurations
10510 • 10510S



MODEL 10510

—REVERSIBLE CARRY-CLIP



MODEL 160SBT

160 TK-1 TETHER KNIFE

Single piece steel architecture is both blade and handle, which is big enough to be useful, yet small enough to stay out of the way. An ultra-thin molded sheath is anatomically friendly and secures the knife well. Around the neck, around your active world—an alternate approach to knife carry.

MODEL 160 TETHER KNIFE - Blade Material: 440C Stainless Steel Hardened to 58-60HRC; Length: 2.00” (5.08cm); Thickness: 0.125” (3.18mm); Overall: 5.75” (14.50cm); Weight: 1.50oz (42gm); Handle: Skeletonized Full-Tang; Black Thermal Plastic Coating; Handle Thickness: 0.18” (0.45cm); Sheath: Molded Kydex®/Thermoplastic; Weight: 1.00oz (28gm); Blade Style: Modified Utility

Available Blade Configurations
160SBK



EXPECT MORE

We didn't invent the knife. We challenge it. The technology and expertise behind these unique tools is derived directly from a passion to innovate and improve. Don't ask us why we do it this way, ask our customers— that's who we're working for. What do you expect?

WHAT'S IN A KNIFE?

Stronger. Better. Safer. Smarter. Everyday, whether at work, at home, or at play, you are presented with options. Options to accept complacency or the opportunities to search out a better way. And so it is with knives, the option to have the best tool for the job.

Too often people take their choice of knives for granted when the reality is that if they took the extra time to learn the true differences, it could translate into extra time and money saved over the long haul. Easier access, enhanced edge retention, durability, and higher standards of manufacturing qualities equate to enhanced performance— more value for the money.



Like most things, knives have evolved over the years. It's well worth your while to take some time to seek out the modern advantages.

There are some very important considerations when it comes to selecting and purchasing a knife. The alternative could mean frustration with a dull knife, or it could mean regret of something more serious. The choice is yours.

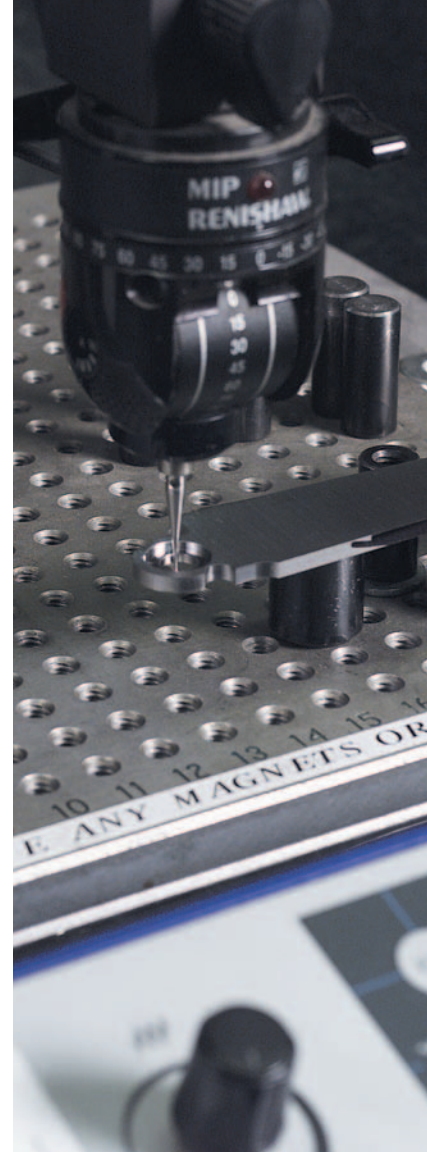
FOR STARTERS...

DESIGN Is it a practical one? Will the blade shape offer good utility? Does it fit my hand? Will it support my cutting tool needs?

MECHANISM Can I open and close it easily, and with one hand? Will it open and close intuitively without having to focus attention to it? Does it stay open or closed reliably? Is it intended to enhance user tool function, or only manufacturer tool sales?

MATERIALS Do the materials enhance its performance, or offer improved levels over others? Are the materials strong, durable and offer added value? How often will it have to be sharpened? Are the materials truly what they say they are?

QUALITY Does it feel solid and well built? Does the blade wobble? Do all of the components fit together properly? Will the manufacturer warranty any issues?





FORWARD THINKING

You must have it to succeed. And to make certain it never fades, we established the Benchmade Custom Design Team. It's founded on the premise of a high regard for the individual custom knife maker who pours their genuine passions, and given talents into making unique realities one piece at a time. To them, it goes beyond earning a living, it's an opportunity to express their own interpretations of cutting edge design.

Benchmade has perfected a collaboration of efforts with these rogues of conformity, tapping into the newest in locking mechanisms, progressive designs, and the latest in materials. Ultimately, this intellectual exchange transpires into something special in the form of a Benchmade knife.

THE DESIGNERS

MEL PARDUE The senior team member, Mel has been grinding sparks, making knives and creating a following for 20-plus years. His style has a class and simplicity all its own. The Pardue collaborations offer great utility to the everyday knife user while at the same time presenting an upscale distinction. Less is definitely more with Mel's designs.

BILL McHENRY & JASON WILLIAMS It runs in the family... Bill and stepson Jason spend their days making exquisite pieces of "art with an edge on it." Their dedication and talents compliment one another very well, and have led to several noteworthy innovations in the knife making world. Benchmade was fortunate to be involved with one such innovation, the AXIS mechanism. The rest is history in the making.

WARREN OSBORNE Being raised in the farming and ranching industry taught Warren early on what great utility a quality knife can offer. How a knife feels in the hand over extended use, blade design/edge configurations, and the types of materials used are all mandatory considerations of an Osborne design.

STEVE FECAS The mystique of custom knives, and what they have to offer, caught Steve's

eye nearly 30 years ago, and he has been creating his own mystique ever since. The Fecas designs offer a stylish, swept-back profile all their own.

ARMIN STUETZ Armin has been making his fascination with knives a livelihood for many years. Steirer Eisen, his own knife manufacturing company, is located in Styria, Austria. He brings an international presence to the team and says he is only satisfied when his customers are satisfied. Hmm... sounds familiar.

MIKE SNODY Exploding into the knife making world, Mike has successfully created a name for himself in a short amount of time by wrapping solid function in the guise of contemporary design. His design influence is derived from his own personal experiences. And his "sensitive" side certainly hasn't held him back either.

NEIL BLACKWOOD A lifelong hobby turned fulltime profession, Neil grew up naturally working with his hands as his father was a shop teacher. His custom work really takes advantage of the latest materials and works them into creative reflections of his detailed eye. He says if his love of what he does ever fades, he will pick up a fishing pole.



Benchmade, Oregon City, OR

THE MINDSET

It all starts with a commitment to innovation. And for us, it goes beyond simply being innovatively different— Benchmade continually strives to be innovatively better. We believe that when a customer chooses to purchase a Benchmade, they don't do so just to be different, they do so because they want the best. This mindset of innovating for improvement is alive and well throughout Benchmade, it goes into every design, and comes out of every product. Admittedly, it's definitely not the easiest way to make knives, but it's the only way we know how.

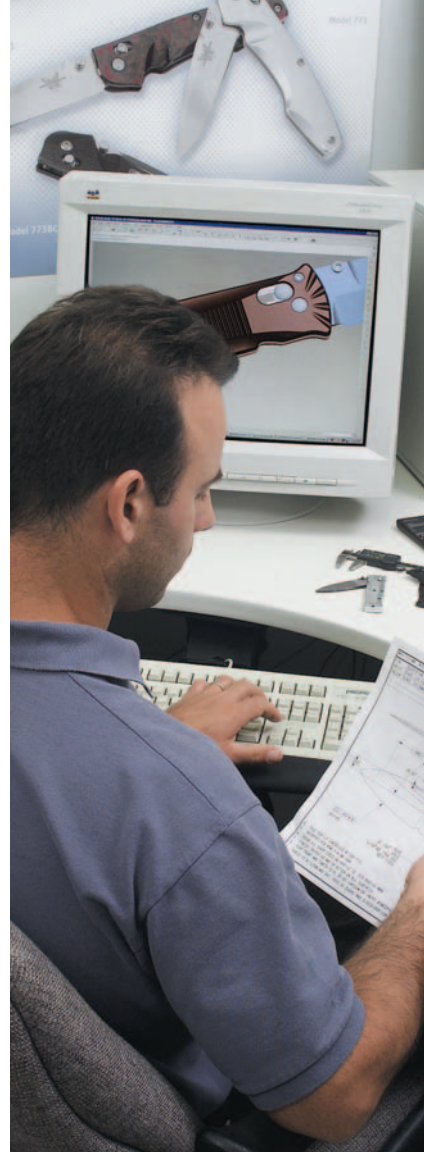
ENGINEERING

Rocket science? Ok, well almost. It all starts with a dedicated Engineering department hell bent on getting it right— before a milling machine ever starts. It means taking an often times custom design concept and unique designer personality, and then translating it into computer renderings and programs for a multitude of individual manufacturing processes. Our engineers are continually checking and rechecking for perfection, and we are fully integrated with our outside manufacturing partners to ensure our Benchmade quality standards are adhered to.

From the latest computer aided design (CAD) software and 3-D modeling technologies to just plain knife-know-how gained from years of experience, it's a test of wills. And when the final prototype is signed off on, the customer always wins.

MANUFACTURING

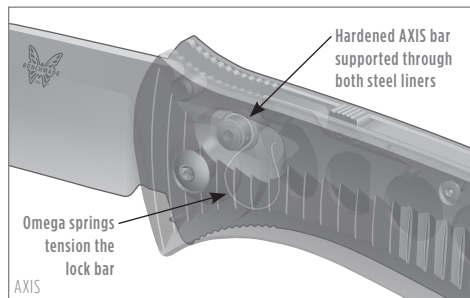
The Benchmade manufacturing arsenal contains ultra-modern laser cutters and machining centers dialed in for spot-on tolerances of 0.0005" on command. Our computerized machining centers offer the precision and control usually found only in the aerospace industry. Most of our products are hand assembled for a "go together" fit and finish typically seen only in a custom knife. But it's more than just having modern equipment, for Benchmade, it's having a workforce of dedicated and professionally skilled people knowing how to make it all work together. We also work with a specially select group of outside manufacturing partners, who are willing to go beyond working for us— they work with us to deliver the best product regardless of price point. It's a lot of effort for just a knife, which is why Benchmade knives aren't "just a knife"... they're engineered cutting tools founded on function, built for performance and recognized for both.



INNOVATIONS IN MOVEMENT

Seems simple enough. You open the knife, you close the knife. But it's the mechanics of motion that happens in the process, which can make the difference between ordinary and extraordinary. Is the knife easy to actuate, can the knife be opened with one hand, is it ambidextrous, and will it be reliable when you need it most? These are all essential considerations when it comes to knife mechanics.

Benchmade offers several mechanisms, from patented exclusives including the unparalleled AXIS, to more traditional lock back designs. It all comes down to your level of desired function.



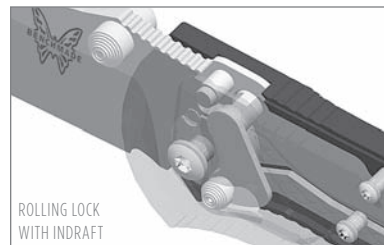
LOCKING MECHANISMS & ASSEMBLIES

AXIS™

A patented Benchmade exclusive, AXIS has been turning heads and winning fans ever since its introduction. A 100-percent ambidextrous design, AXIS gets its function from a small, hardened steel bar which rides forward and back in a slot machined into both steel liners. The bar extends to both sides of the knife, spanning the liners and positioned over the rear of the blade. It engages a ramped, tang portion of the knife blade when it is opened. Two omega style springs, one on each liner, give the locking bar its inertia to engage the knife tang, and as a result the tang is wedged solidly between a sizable stop pin and the AXIS bar itself.

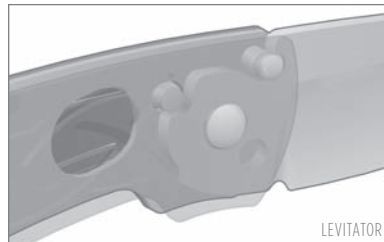
ROLLING LOCK® WITH INDRAFT®

Another patented Benchmade exclusive, the Rolling Lock utilizes a sizable, notched lock-pin which secures against the blade tang when engaged. To disengage, a spring actuated thumb button on the right handle side is drawn back to rotate the lock-pin and free the blade. InDraft, a patented exclusive, is a combination of a slotted liner and a pin in the blade tang working in tandem to generate an inward inertia when closing the blade. This results in one of the safest blade detents available today.



LEVITATOR®

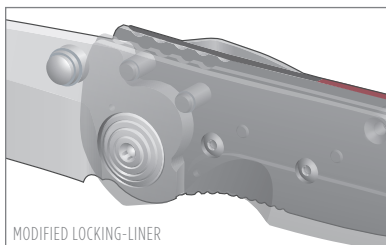
A patented Benchmade exclusive, the knife handle scale/liner is cut to create a spring system which is used to leverage a lock-pin in and out of a notch in the tang of the blade. This spring/pin system effectively locks the blade both in the open and closed positions.



MODIFIED LOCKING-LINER

The basic principle is an integral locking bar within the knife liner being stress bent, enabling it to spring into position behind the rear tang of the blade when the blade is opened. The locking bar wedges against

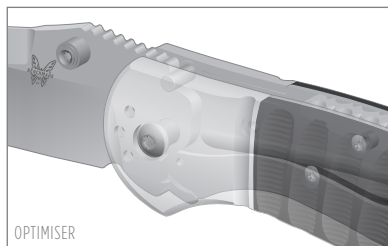
the rear of the blade, locking it open until you physically push it clear and close the blade (locking-liners are made either right or left hand specific). And with a Benchmade modified locking-liner you get a patented feature which helps to enhance the lock function. The function success and function failure of a locking-liner depends greatly on how well it is made and also the quality of the materials used. With Benchmade, you get the best of both, and we offer it in a variety of knives.



OPTIMISER®

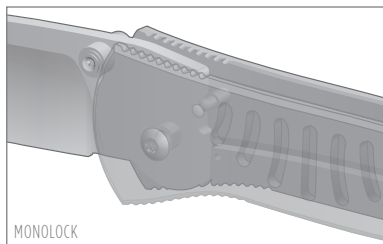
Another patented Benchmade exclusive, which “optimizes” the knife mechanism if the user chooses to do so... A spring steel bar running the length of the inside handle spine is secured in place and contacts a surface area of the blade tang. As the blade is closed the spring is tensioned against the blade tang, then as the user rotates the

blade open to a 30-degree angle, the spring takes over and continues the blade opening process on its own. The huge advantages to the Optimiser design over other similar concepts, is that the blade must be rotated open to beyond a 30-degree angle, which offers added user control. And even more amazing, the Optimiser can be added or removed at the discretion of the user and the knife/mechanism still functions normally. The choice is yours.



MONOLOCK

The monolock mechanism is basically a locking-liner on steroids. The knife liner is one in the same as the knife handle, and thus it is designed and made to function as the locking mechanism. Subsequently, a thicker material is used to provide enough surface area to be a functional handle, and in turn creates a larger surface area to lock the blade with. If executed properly, the monolock design rates very highly in strength and function.



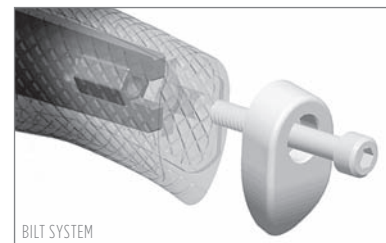
LOCK BACK

A basic functional lock that is relatively simple and low cost to manufacture. In practice the lock design positions a stop bar parallel to and in direct line with the blade at the upper back or rear tang of the blade to lock the blade open. Basically, as the blade is rotated open, the spring tensioned, center pivoted stop bar tracks around the circular portion of the blade tang until it drops or locks into the notched out tang. And to release the lock, the exposed portion of the stop bar in the handle back is depressed into the handle, pivoting the stop bar out, releasing the locked blade. This style of mechanism requires two hands to safely close the blade although you may still easily open the blade single-handed if desired.



BILT® SYSTEM

A patented Benchmade exclusive, the BILT System (Bolted InLine Tang) simplifies the fixed blade handle assembly process, while at the same time strengthening the overall assembly itself. A long nut is positioned in the slotted full-tang; a hardened bolt is passed through the butt-cap and then threaded into the nut drawing the handle assembly together for a solid fit.





ADVANCED MATERIALS

So what's it made of? Which blade steel is best? Just a couple of the questions we are asked when people see our knives, and the answers come down to this— Benchmade uses a variety of modern materials specially selected for their superior performance characteristics. We strongly believe that if you're going to put this much effort into designing a custom quality cutting tool, then it only makes sense to build it of the materials which compliment its form and enhance its function. And in some instances it's more than just selecting a certain material, it's what we do to it to bring out the extra edge which sets us apart from everyone else. Bottom line, we would much rather overbuild a knife than risk the alternative— we thought you would like that, too.

BLADE STEELS & FINISHES

154CM

An American made premium grade stainless steel originally developed for tough industrial applications. Known for its best all-around qualities, it offers great corrosion resistance with good toughness and edge quality.

S30V

An American made and developed premium grade stainless steel created especially for knives. It is a powder made steel with a uniform carbide distribution and clean steel properties. As a blade material it offers excellent corrosion resistance and superb edge qualities.

D2

An air-hardened tool steel, which offers good corrosion resistance and excellent mileage in wear resistance. A good choice for hard use applications.

440C

A high-chromium stainless steel with a terrific balance of good hardness and corrosion resistance. 440C takes a nice edge and is fairly easy to sharpen. An excellent value priced steel for its performance.

M2

A very tough, tool grade high-speed steel used primarily as a cutting steel in the industrial area. It offers exceptional strength and wear resistance. Due to its make up, it is highly susceptible to corrosion, so we always apply our BK1™ coating for corrosion resistance. An excellent choice for hard use environments.

N690

An Austrian made stainless steel, which is comparable to 440C in performance and value. Keen edge qualities with great corrosion resistance.

AUS-8

A low-carbon, high chromium stainless steel, which offers a good balance of toughness, edge sharpness and corrosion resistance.

X15 T.N

This steel was developed for the aircraft industry for jet ball bearings, as well as the medical industry for scalpels. It has the ability to resist rust in the worst of conditions while maintaining ample edge retention. The capability behind this steel is in the way it is manufactured, resulting in the finest steel for use in harsh environments such as salt water. The edge on an X-15 T.N blade is easier to maintain.

DAMASCUS

A specially forged, layered steel made up of a variety of steels. It offers remarkable toughness and edge quality. For finishing, the surface layers or lines are exposed through an acid etch, which creates a very unique visual effect. Used in special applications due to its inherent high cost and artistic nature.

BPI™ COATING

Black Pearl (BP) is a PVD (physical vapor deposition) coating made up of Titanium Carbo-Nitride (TiCN for short). It is a darker, near black, scratch resistant coating with nice decorative qualities.

BKI™ COATING

BenchKote™ (BK) is our new proprietary poly-ceramic coating. It is a matte black coating that provides excellent corrosion protection, which exceeds the ASTM-117 spec for saltwater while possessing higher scratch resistance.

COMBOEDGE™

It denotes our partial serration on the plain edge blade configuration. Benchmade's serration pattern offers ideal cutting ability for fibrous materials such as webbing, straps, netting or rope.

HEAT-TREATMENT

Over the years we have developed a "special recipe" for heat-treating our blade steels. This process maximizes the steels' molecular

COMMON BLADE STEELS

STEEL	CARBON	CHROMIUM	COBALT	NITROGEN	MANGANESE	MOLYBDENUM	NICKEL	PHOSPHOROUS	SILICON	SULPH	TUNGSTEN	VANADIUM	HRC
154CM	1.05	13.00-15.00	-	-	0.50	4.00	-	-	0.30	-	-	-	58-60
ATS-34	1.05	14.00	-	-	0.40	4.00	-	0.03	0.35	0.02	-	-	58-60
S30V	1.45	14.00	-	-	-	2.00	-	-	-	-	-	4.00	58-60
X15 T.N	0.40	15.50	-	0.20	< 0.60	2.00	0.30	< 0.02	< 0.60	< 0.005	-	0.30	58-60
M2	0.78-0.88	3.75-4.50	-	-	0.15-0.40	4.50-5.50	0.30	-	0.20-0.45	-	5.50-6.75	1.75-2.20	60-65
D2	1.40-1.60	11.00-13.00	-	-	0.60	0.70-1.20	0.30	-	0.60	-	-	1.10	57-61
440A	0.65-0.75	16.00-18.00	-	-	1.00	0.75	-	0.04	1.00	0.03	-	-	55-57
N690	1.07	0.40	1.50	-	0.40	1.10	-	-	0.40	-	-	0.10	58-60
440C	0.95-1.20	16.00-18.00	-	-	1.00	0.75	-	0.04	1.00	0.03	-	-	58-60
AUS-8	0.70-0.75	13.00-14.50	-	-	0.50	0.10-0.30	0.49	0.04	1.00	0.03	-	0.10-0.26	58-59
420HC	0.46	13.00	-	-	-	0.40	-	-	0.40	-	-	0.30	58-60
AUS-10	0.95-1.10	13.00-14.50	-	-	0.50	0.10-0.31	0.49	0.04	1.00	0.03	-	0.10-0.27	59-60
BG-42	1.15	14.50	-	-	0.50	4.00	-	-	0.30	-	-	1.20	61-63
CPM(T)440V	2.15	17.00	-	-	0.40	0.40	-	-	0.40	-	-	5.50	55-57

To help you better understand the science of steel, we offer an overview of some of the commonly used steels in knife manufacturing. Steel is made of iron and carbon in different combinations. When heated to certain temperatures and then cooled down at specific rates, it changes the properties of the metal. By starting with premium steels and employing custom heat-treat practices, Benchmade knives excel in all areas of performance.

structure for a custom toughness and Benchmade superior performance. All steels may be created equally, but that is where it stops when it comes to making a Benchmade.

HANDLES

CARBON FIBER

A contemporary, premium composite of thin strands of carbon tightly woven into various weave patterns, then set in resin, which is

most commonly clear but can be color tinted. It offers great looks and is exceptionally strong for its minimal weight.

STABILIZED WOOD

Select hardwood veneers are vacuum impregnated with special dyes and resins. Sheets are layered and combined under tremendous heat and pressure to adhere the veneers for a durable real wood medium.

MICARTA

Layers of linen cloths soaked in resin and pressured together. Most commonly used on more stylish knives due to its rich finish qualities. Available in colors.

6061 T-6 ALUMINUM

A nonferrous metal originally developed as a premium aircraft grade aluminum, it offers a solid handle form and function at a nominal weight. Most typically color anodized.



HANDLES CONT.

KRATON®

A thermoplastic elastomer offering excellent flexibility and memory elasticity even under harsh conditions. It is over-molded onto the handle for added grip surface and tactile qualities.

NORYL GTX®

A modern engineered plastic offering high-strength, minimal flex and optimally lightweight properties. Molded to form.

G10

An extremely durable makeup of layers of fiberglass soaked in resin, then highly compressed and baked. Impervious to moisture or liquid and physically stable under climate change. Most commonly black, but is available in various colors, too.

ZYTEL®

A lightweight glass filled nylon engineered for strength and durability. Widely used throughout the auto industry in engine related components. Molded to form.

KYDEX®

A mixture of acrylic and PVC, which offers outstanding impact and chemical resistance as well as fire retardancy. Widely used in the auto and aerospace industry. Molded or thermo-formed.

DELRIN®

A lightweight and durable engineered polymer with low wear properties. Used throughout the auto industry. Molded to form.

VALOX®

A reinforced resin with excellent stiffness, strength and dimensional stability. Molded to form.

ANODIZATION

An electrochemical process used for adding color to titanium surfaces. A combination of chemical bath and electrical voltage level generates the desired color. A similar process is used for aluminum with the addition of a chemical coloring bath.

LINERS

6AL 4V-TITANIUM

Considered an exotic metal alloy (Titanium + 6% Aluminum + 4% Vanadium) with an excellent strength to weight ratio, which offers exceptional performance in a knife. Titanium is corrosion resistant to natural elements as well as many industrial chemicals.

420J STAINLESS STEEL

A common knife grade with low carbon, high chromium content steel which offers excellent bend toughness and wear ability. It offers

excellent corrosion resistant characteristics as well. Also used in handles.

SHEATHS

BALLISTICS NYLON

A heavy duty woven nylon fabric originally developed for use in bullet proof vests and personal body armor. Offers great durability in a lightweight sheath.

SANTOPRENE®

A thermoplastic elastomer which is molded to specification. It offers excellent flexibility with high tear strength and fatigue resistance. Good resistance to many harsh chemicals. All of these features contribute to improved performance in a grueling range of tough jobs.

LEATHER

A natural material dating back to man's earliest beginnings in the knife world. It can be easily dyed and tooled for desired visual effect. Offers traditionally accepted levels of performance and design.

The following are registered trademarks of their respective companies: Delrin®, E.I. du Pont de Nemours & Company; Zytel®, E.I. du Pont de Nemours & Company; Kydex®, Kleeindex Company; Noryl GTX®, General Electric Company; Valox®, General Electric Company; Xylan®, Whitford Worldwide Corporation; Kraton®, Kraton Polymers Company; Santoprene®, Advanced Elastomer Systems

EXTRAS

There's more to Benchmade than just great knives. We also offer you the service and support to back up or enhance the performance of our knives. From the finest customer service in the industry to branded clothing and specialty items— it's all available for you to take advantage of. And if you find that something is missing or needs improvement, let us know, we want to hear about it.



THE BLUE BOX

SPECIALTY ITEMS

New logo, new specialty items and new clothing on the way from your favorite knife company. You Benchmade fans are going to want to check out and check back often for the latest in Benchmade fashion. There are shirts, caps, jackets and plenty other ways to strut your stuff. New this year too are posters and decals to customize your own Benchmade world. Our plan is to create more items for you to choose from and enjoy, so check our web site often to be sure you're sporting the latest in sharp threads.

ACCESSORIES

THE BLUE BOX Benchmade uses "six-lobe" headed screws exclusively throughout the assembly of our knives. This unique screw style offers a more "controllable" means of achieving tightness. Occasionally you may want to adjust blade tension, remove the carry-clip or simply check for any loosened screws, so we offer this handy kit for those purposes. Kit includes bit sizes 6, 7, 8, 10, 15, one Phillips head bit, and bit holder/extension all self-contained in a molded plastic case which doubles as the handle. Features removable plastic carry-clip on case.
Part Number 981084

SHEATH CARRY ACCESSORIES

We offer several carry accessories so you can modify your Benchmade sheaths to better suit your particular carry needs. These include: A Metal-clip w/lash tab; B Molded belt loop with bridge/hardware; NOT PICTURED: Tek-Lok® and Perma-Clips®; individual lash tabs; and Carry-Strap w/lash tab. (NOTE: Some items offer limited to model specific applications).

PART NUMBERS AND PRICING

- 981607** (A) Metal-Clip w/lash tab (fits Model 5, 100, 140, 141, 145, 160, 175, 10510)
- 981608** (B) Molded Belt-Loop w/bridge (Model 100, 140, 141, 145)
- 981609** (C) Tek-Lok®, large size
- 981610** (D) Perma-Clips® for large Tek-Lok (set of 2)
- 981611** (E) Carry-Strap w/4-way lash-tab (metal-clip clips into this)
- 981612** Lash-Tab (can be sewn onto clothing or gear)



SOFT SHEATHS

For those individuals who prefer to carry their knives in a sheath, we offer a simple but effective design, which is available in several sizes. There are two different sizes (small 1.625" W x 5.00" D; large 2.00" W x 5.25" D) for folders, and additionally we offer one with a smaller second pocket to accommodate a Rescue Hook or small knife. We also offer a 4-inch Bali-Song sheath (not pictured). All soft sheaths are made of 1680 denier poly-ballistic nylon with liners and they are edged with nylon for a clean, no-snag finish. They feature Velcro® closures.

PART NUMBERS AND PRICING

- 981086** Soft Sheath, small size (1.625" W x 5.00" D), black
- 981087** Soft Sheath, large size (2.00" W x 5.25" D), black
- 981787** Soft Sheath, dual carry/pocket (2.00" W x 5.00" D), black
- 981717** Soft Sheath, Bali-Song Model 40 Series, black



BENCHMADE KNIFE ATTACHÉ

Now you can keep all of those Benchmades in one place... This soft carry-case holds up to 12 folders. Its shell is constructed of a heavyweight denier and is stitched plenty strong for lasting wear. A deep plush interior lining ensures scratch-free storage. A total of twelve, 1.50 x 5-inch pocket, with six pockets featuring a split-window for easier small knife retrieval. Velcro® flap closure holds everything in place, and proudly displays the Benchmade name embroidered on its face.

Part Number 981456



MILITEC-1®

It's what we use at the factory. A "chemically-reacted synthetic based metal conditioner that protects metal with a constant synthetic-based impregnated molecular structure." Simply put, it delivers constant lubrication; reduces friction and wear; inhibits corrosion; and causes no unwanted material buildup. Works great on knives and many other metal-to-metal situations.

PART NUMBERS AND PRICING

- 981368 Militec-1, 1oz. Squeeze bottle
- 981369 Militec-1, The Sniper Pak (4oz. Squeeze bottle w/tip; stainless steel applicator needle; 1/4oz. bottle)
- 981370 Militec-1, 4oz. Squeeze bottle
- 981371 Militec-1, stainless steel applicator needle



POLO SHIRTS

What better way to break out the new brand than with a fresh looking polo. White polos feature the new individual product class color scheme embroidered on the left chest so you can be true to your favorite brand in style. Gray polos feature blue logo embroidery on left chest. Polos are 7oz/100-percent cotton with shirt cuffs and 3-button collar.

Features: Double needle hem with side vents and extended tail.

PART NUMBERS AND PRICING (White Polos)

- 982582 M White polo w/Red logo
- 982583 L White polo w/Red logo
- 982577 L White polo w/Blue logo
- 982580 L White polo w/Black logo
- 982584 XL White polo w/Red logo
- 982578 XL White polo w/Blue logo
- 982581 XL White polo w/Black logo
- 982585 XXL White polo w/Red logo
- 982579 XXL White polo w/Blue logo

PART NUMBERS AND PRICING (Gray Polos)

- 982573 M Gray Polo w/Blue Logo
- 982574 L Gray Polo w/Blue Logo
- 982575 XL Gray Polo w/Blue Logo
- 982576 XXL Gray Polo w/Blue Logo



MOCK TURTLENECKS

Stick your neck out... in Benchmade style with the new mock turtlenecks. These are always a favorite, long-sleeved casual wear with your favorite knife company name embroidered on the collar. Mocks are 6oz/100-percent cotton with cuffs and mock collar. Available in black or heather gray shirt colors.

Shell: Interlock 6 oz., 100% Combed ring-spun cotton.
Features: Mock turtleneck. LycraR rib knit collar and cuffs hold their shape. Top stitched at the shoulders. Double needle cover stitch, hemmed bottom.

PART NUMBERS AND PRICING

982565	M Gray Mock	982567	XL Gray Mock
982569	M Black Mock	982571	XL Black Mock
982566	L Gray Mock	982568	XXL Gray Mock
982570	L Black Mock	982572	XXL Black Mock



BLACK SWEATSHIRT

Looking for something new to wear on those “cool” days? No sweat! Get one of these high quality black sweatshirts with royal blue accent trim. The Benchmade logo is embroidered in black color on the left chest to make a statement of your knife intelligence for all to envy. Sweatshirts are black with royal blue trim, Sport-Tek™ fleece 9oz/60-percent cotton with knit collar, cuffs and waistband.

Features: V Notch, Fully Overseamed, Rib-knit collars, cuffs and waistband.

PART NUMBERS AND PRICING

982561	M long sleeve BLK sweatshirt
982562	L long sleeve BLK sweatshirt
982563	XL long sleeve BLK sweatshirt
982564	XXL long sleeve BLK sweatshirt



LOGO HATS

New for this year and in association with the redesigned Benchmade logo, are some good looking hats! These hats are sporting either the butterfly logo offset to one side on the front, or the text logo centered on the front.

PART NUMBERS AND PRICING

982614	Blue Hat/Centered Black Logo
982613	Blue Hat/Offset Black Logo
982635	Gray Hat/Offset Red Logo
982634	Gray Hat/Offset Blue Logo
982636	Gray Hat/Offset Black Logo



SPECIAL SERVICES



LIFESHARP® SERVICE There's never a dull moment with a Benchmade... That's right! We will gladly sharpen your Benchmade knife to a factory razor sharp edge (service does not apply to any serrated portion of the blade). If you prefer us to sharpen your blade, or if you may have neglected to maintain your edge for a while, simply ship your knife to us. We'll not only sharpen it, we will also inspect the knife for any warranted repairs and “tune” the knife for optimum performance. Simply ship the knife to the Benchmade address, postage paid and insured. Please enclose your return shipping address with \$5.00 to cover return shipping charges.

PERSONALIZED LASER MARKING Put your name on it. Make it yours. Commemorate an event or outfit the club. Whatever the circumstance, now you can have your logo or artwork laser etched onto any of the Benchmade knives. The etched mark becomes a permanent signature on the knife in the same way we brand the knives with the Benchmade logo. Depending on the particular model, the mark can be placed either on the blades, or in some models, on the handles. All it takes is a clean, black and

white representation of your logo or artwork, and we can take it from there. If you are interested in this special service, simply call a Benchmade customer service representative at 800.800.7427. Basic set-up charges and quantity restrictions do apply.

THE ULTIMATE SOURCE

WWW.BENCHMADE.COM New this year we have a whole new web site with many new features to help you stay connected with everything Benchmade. From views of every Benchmade model configuration to creating a list of your personal favorites for future reference, it's been modified to improve your Benchmade cyberspace experience. For the new Benchmade visitor there's expanded product and technical information to make your "initiation" process easier. And for you Benchmade addicts, you can get your fix of the latest model introductions as well as share your knife knowledge and Benchmade experiences with the rest of the world. The web site also has a handy dealer locator so you can find your nearest source for cutting edge innovation close to home. Or, if you prefer, you can buy direct from the factory and have it shipped right to your door. So your inside track on everything Benchmade is only a click away at benchmade.com.

THE WARRANTY

LIMITED LIFETIME WARRANTY. Benchmade Knife Company, Inc. ("Benchmade") warrants to the original owner that this knife will be free from defects in materials and workmanship. Benchmade will, without charge, repair or replace, at Benchmade's option, any knife returned for Warranty work and found to be defective by Benchmade. The knife must be shipped by owner prepaid and insured freight, together with a description of the problem, and must be accompanied by the original bill of sale, your charge or credit card receipt or any satisfactory proof of the original date of purchase from a retail dealer. Any automatic knife returned for Warranty service from outside of Oregon must also include a copy of the owner's active police or military identification, or be returned through the authorized Benchmade dealer from whom the knife was originally purchased. **NO EXCEPTIONS WILL BE MADE.**

WHAT IS COVERED— This Warranty covers replacement parts and labor. **WHAT IS NOT COVERED**— This Warranty does not cover normal wear, resharping of the blade, damage caused by neglect, misuse or the failure to perform normal or necessary maintenance, disassembly of any knife by any person other than Benchmade's Warranty department, or shipping costs for returned knives.

Do not use your new knife as a screwdriver, prybar, chisel or punch. Do not throw your knife or use it for any purpose other than cutting. Do not disassemble your knife. Do not sharpen your knife on a power grinding wheel. Any of these acts will void your Warranty. **MINIMUM CHARGE TO REASSEMBLE A KNIFE WHEN WARRANTY HAS BEEN VOIDED IS \$20 PLUS PARTS.**

Repair or replacement as provided under this Warranty is the exclusive remedy of the consumer.

Benchmade shall not be liable for any incidental, reliance, or consequential damages or breach of implied Warranty on this product, including any damage to person or property. Benchmade's liability under any circumstances is limited to the purchase price. Some states do not allow exclusion or limitation of incidental or consequential damages, so the above limitations or exclusions may not apply to you. This Warranty gives you specific legal rights, and you may also have other rights which vary from state to state.

This knife has only one use, as a cutting tool. Benchmade's knives carry no warranty except as expressly contained herein. Benchmade disclaims all warranties of merchantability and fitness for a particular purpose other than for use as a cutting tool. There are no warranties which extend beyond the description contained herein.

Please review the complete Warranty information and proper knife care instructions provided with each knife.

The purchase, use and ownership of knives is subject to a wide variety of local laws and regulations. It is impossible for Benchmade Knife Company to know or interpret all of these laws. It is the responsibility of the buyer to be aware of the laws which govern them in their specific area wherever that may be. We encourage the responsible ownership and use of knives as one of mankind's oldest tools. Be smart and be safe.

Benchmade is proud to be a charter member of AKTI. Get involved. Help to protect your knife freedoms—

JOIN AKTI TODAY!
877.752.8770 or www.akti.org



The following are registered trademarks of Benchmade Knife Company, Inc., Oregon City, Oregon USA: Benchmade; Activator; Ambush; Apparition; Bali-Song; (butterfly logo); Benchmite; BT2; ComboEdge; Gamer; Griptilian; LEVITATOR; LifeSharp; MonoChrome; Nimravus; Optimiser; Outbinder; Pika; Presidio; Prestigedges; Resistor; Stryker; Switchback. • The following are trademarks of the Benchmade Knife Company, Inc., Oregon City, Oregon USA: Ares; Ascent; AXIS; BenchKote (BK); BILT (Bolted In-Line Tang); Dark Star; Gravitator; InDraft; Offsider; Opportunist; Park Avenue; Pinnacle; Rant; Reflex; Sequel; Skirmish; Snipe; TAC (Technically Advanced Cutlery); Held To A Higher Standard. • Note: We reserve the right to make any design and/or material modifications without prior notice. • Benchmade products are manufactured under one or more of the following patents: Safety Lock for Automatic Folding Knife— U.S. Patent No. 5,822,866; Blade Lock Mechanism for Folding Knife (Modified Locking Liner)— U.S. Patent No.— 5,755,035; Pocket Knife With Lock (AXIS Lock)— U.S. Patent No. 5,737,841; Folding Knife (Design, Stryker Model)— U.S. Patent No. D408,706; Knife Blade (Design, Stryker Model)— U.S. Patent No. D409,070; Folding Knife With Grooved Handle (Design, Model 350, 3550)— U.S. Patent No. D397,017; Grooved Knife Handle (Design, Model 350, 3550)— U.S. Patent No. D397,020; Folding Knife (Design, Ascent Model)— U.S. Patent No. D385,173; Knife Design (Design, Ascent Model)— U.S. Patent No. D384,871; Portion Of A Blade For A Knife (Design, Pardue Model 720 Knife)— U.S. Patent No. D426,132; Knife Blade (Design, Model 140/145)— U.S. Patent No. D425,389; Knife Handle (Design, Model 705)— U.S. Patent No. D428,789. Other patents pending.

IT'S AUTOMATIC

Benchmade Knife Company manufactures what are arguably the finest automatic* knives available in the world today. These knives are made to the same, exacting performance standards as the rest of our knives.



*Within the United States, automatic open knives are subject to compliance with the Federal Statutes of interstate commerce.



NEW! Announcing a new line of knives designed and produced to the exacting standards of the NRA. Ranging from traditional hunting and pocketknives to modern sporting cutlery, there's sure to be something for everyone. It's a mix of all new designs developed and manufactured at the special request of the NRA to represent an exclusive line of cutlery worthy of the NRA name.

These knives are just the beginning of a collection of field-tested and feature loaded

“best in class” products within the NRA Outdoors®. The National Rifle Association has put together a solid mix of products geared towards those who appreciate the outdoors.

A portion of the proceeds from the sale of NRA Knives™ and NRA Outdoors products benefit wildlife conservation, youth programs, education, safety and other essential programs that help to preserve America's heritage for future generations.

Go to nraknives.com and get outdoors today!